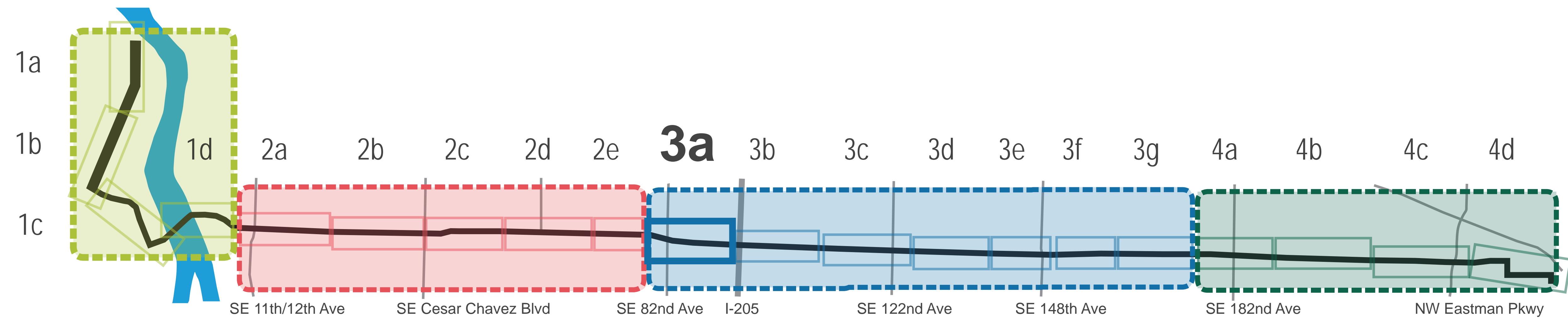


# SEGMENT 3

OUTER DIVISION • SE 78th Ave to SE 174th



**LEGEND Proposed Design Elements**

- Bus Station
- Business Access Transit Lane (BAT)
- Protected Bicycle Facility
- Sidewalk/Island
- Bioswale
- Median Access Control
- Downtown Stop
- Downtown Bus Route
- Driveway Closure
- Property Line
- Right-of-Way Acquisition
- Temporary Construction Easement
- Tree Removed
- Signal Improvement
- New Pedestrian Crossing Signal

**Bus Station Types**

- ① Integrated 1 By-pass
- ② Integrated 2 Pass-through
- ③ Integrated 3 Rear Access
- ④ Island 1 Intersection
- ⑤ Island 2 Mid-block
- ⑥ Island 3 Rear Access

**Outer Division Multi-Modal Safety Project Improvements**

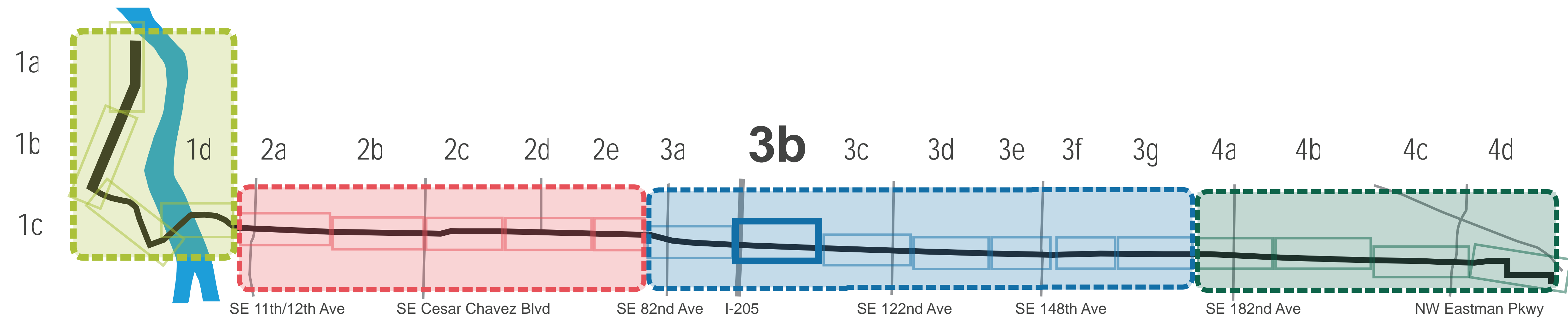
- Median Access Control
- New Pedestrian Crossing Signal





# SEGMENT 3

OUTER DIVISION • SE 78th Ave to SE 174th



**LEGEND Proposed Design Elements**

- Bus Station
- Business Access Transit Lane (BAT)
- Protected Bicycle Facility
- Sidewalk/Island
- Bioswale
- Median Access Control
- Downtown Stop
- Downtown Bus Route
- Driveway Closure
- Property Line
- Right-of-Way Acquisition
- Temporary Construction Easement
- Tree Removed
- Signal Improvement
- New Pedestrian Crossing Signal

**Bus Station Types**

- ① Integrated 1 By-pass
- ② Integrated 2 Pass-through
- ③ Integrated 3 Rear Access
- ④ Island 1 Intersection
- ⑤ Island 2 Mid-block
- ⑥ Island 3 Rear Access

**Outer Division Multi-Modal Safety Project Improvements**

- Median Access Control
- New Pedestrian Crossing Signal



④ Island 1 Intersection Station Type

⑤ Island 2 Mid-block Station Type

⑥ Island 3 Rear Access Station Type



# SEGMENT 3

OUTER DIVISION • SE 78th Ave to SE 174th

## LEGEND Proposed Design Elements

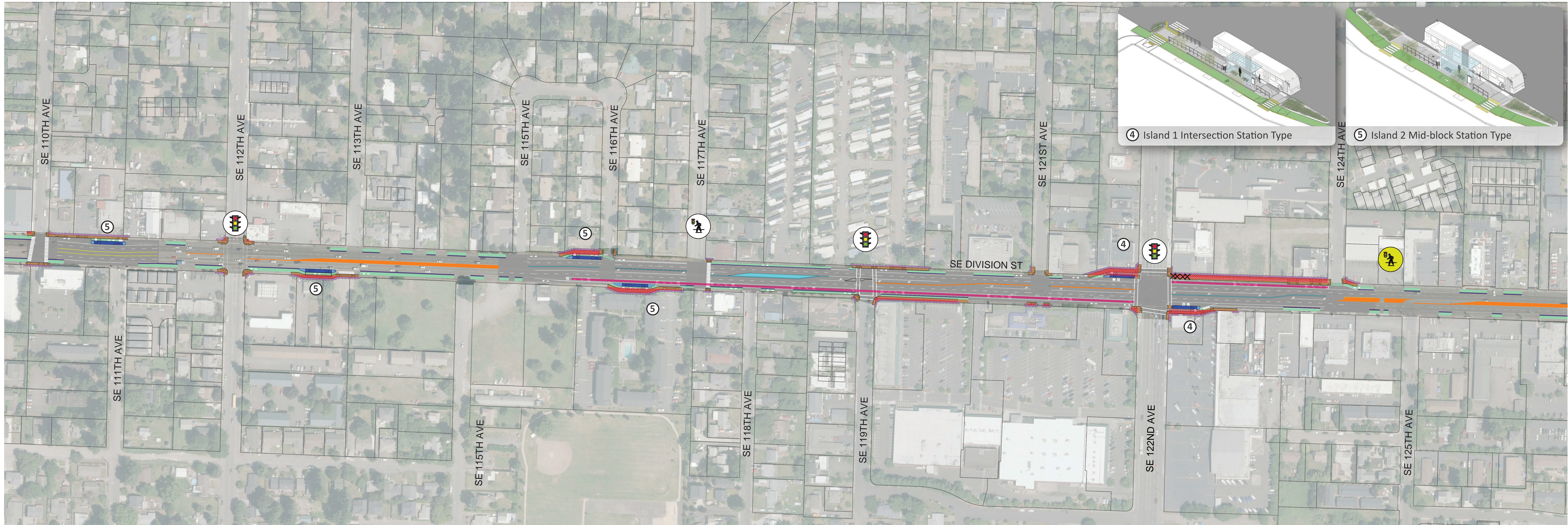
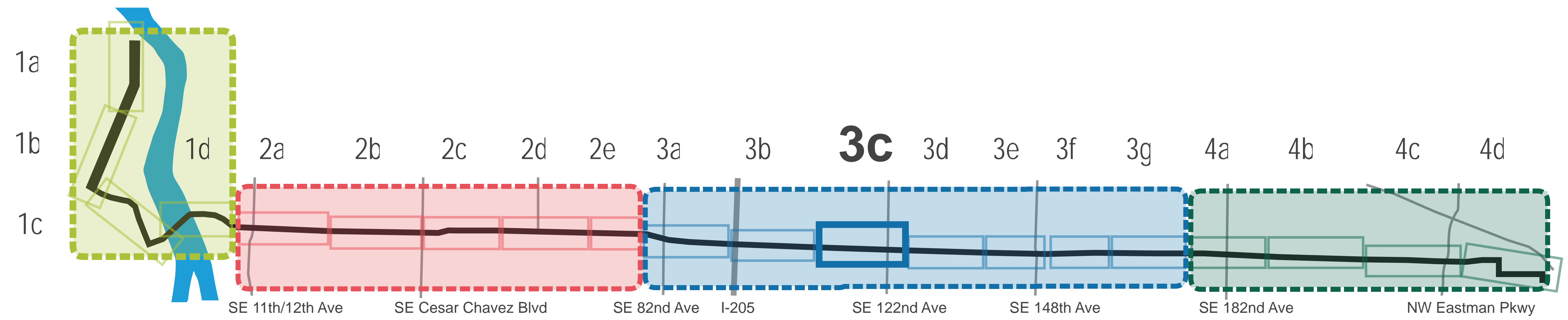
- Bus Station
- Business Access Transit Lane (BAT)
- Protected Bicycle Facility
- Sidewalk/Island
- Bioswale
- Median Access Control
- Downtown Stop
- Downtown Bus Route
- Driveway Closure
- Property Line
- Right-of-Way Acquisition
- Temporary Construction Easement
- Tree Removed
- Signal Improvement
- New Pedestrian Crossing Signal

## Bus Station Types

- Integrated 1 By-pass
- Integrated 2 Pass-through
- Integrated 3 Rear Access
- Island 1 Intersection
- Island 2 Mid-block
- Island 3 Rear Access

## Outer Division Multi-Modal Safety Project Improvements

- Median Access Control
- New Pedestrian Crossing Signal

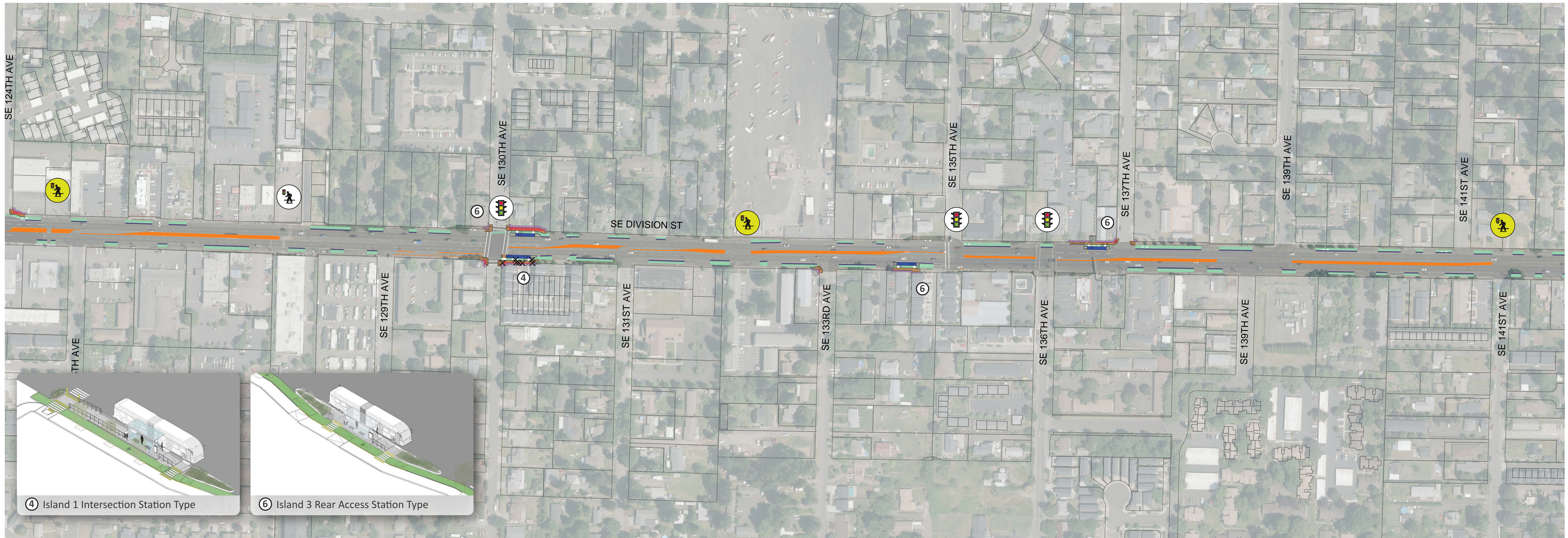
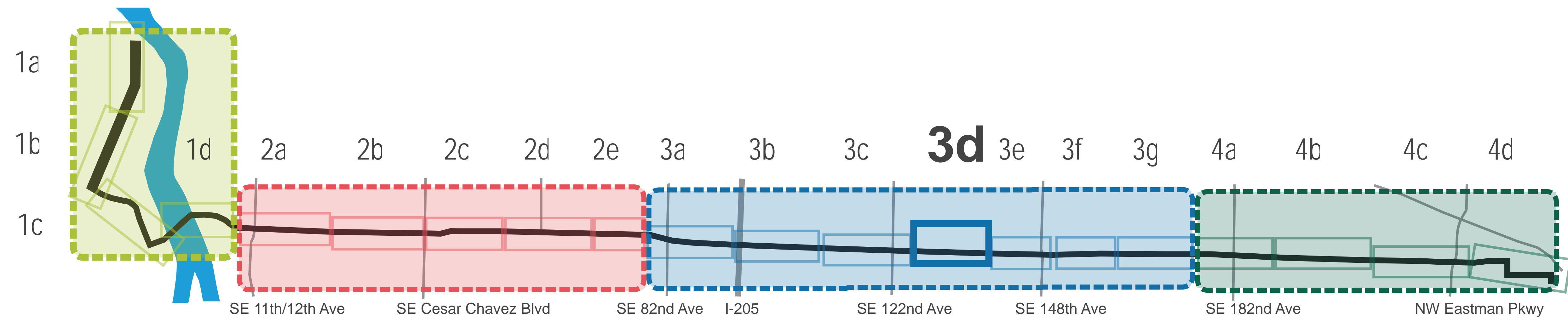




# SEGMENT 3

OUTER DIVISION • SE 78th Ave to SE 174th

LEGEND Proposed Design Elements		Bus Station Types		Outer Division Multi-Modal Safety Project Improvements	
Bus Station	Downtown Stop	Integrated 1 By-pass	Island 1 Intersection	Median Access Control	New Pedestrian Crossing Signal
Business Access Transit Lane (BAT)	Downtown Bus Route	Integrated 2 Pass-through	Island 2 Mid-block		
Protected Bicycle Facility	Driveway Closure	Integrated 3 Rear Access	Island 3 Rear Access		
Sidewalk/Island	Property Line				
Bioswale	Right-of-Way Acquisition				
Median Access Control	Temporary Construction Easement				
	Tree Removed				
	Signal Improvement				
	New Pedestrian Crossing Signal				





# SEGMENT 3

OUTER DIVISION • SE 78th Ave to SE 174th

**LEGEND Proposed Design Elements**

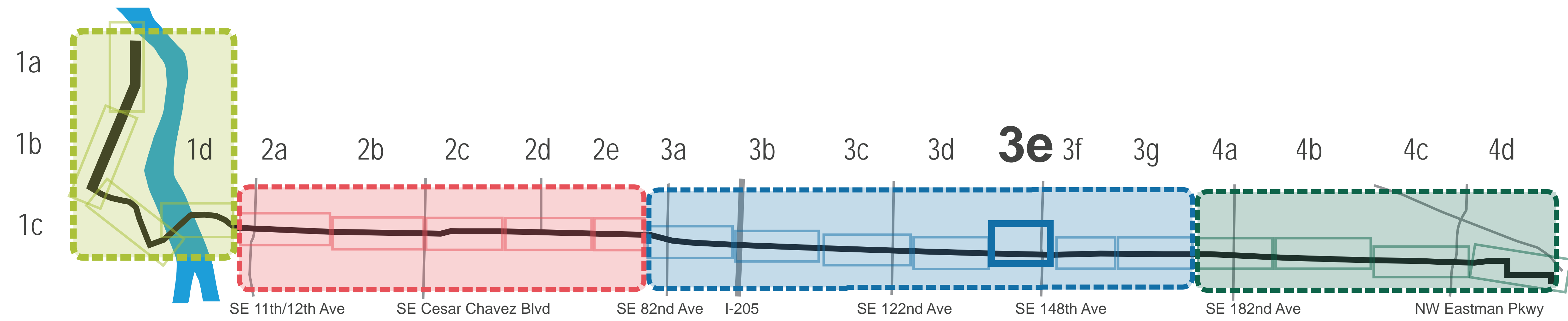
Bus Station	Downtown Stop	Tree Removed
Business Access Transit Lane (BAT)	Downtown Bus Route	Signal Improvement
Protected Bicycle Facility	Driveway Closure	New Pedestrian Crossing Signal
Sidewalk/Island	Property Line	
Bioswale	Right-of-Way Acquisition	
Median Access Control	Temporary Construction Easement	

**Bus Station Types**

Integrated 1 By-pass	Island 1 Intersection
Integrated 2 Pass-through	Island 2 Mid-block
Integrated 3 Rear Access	Island 3 Rear Access

**Outer Division Multi-Modal Safety Project Improvements**

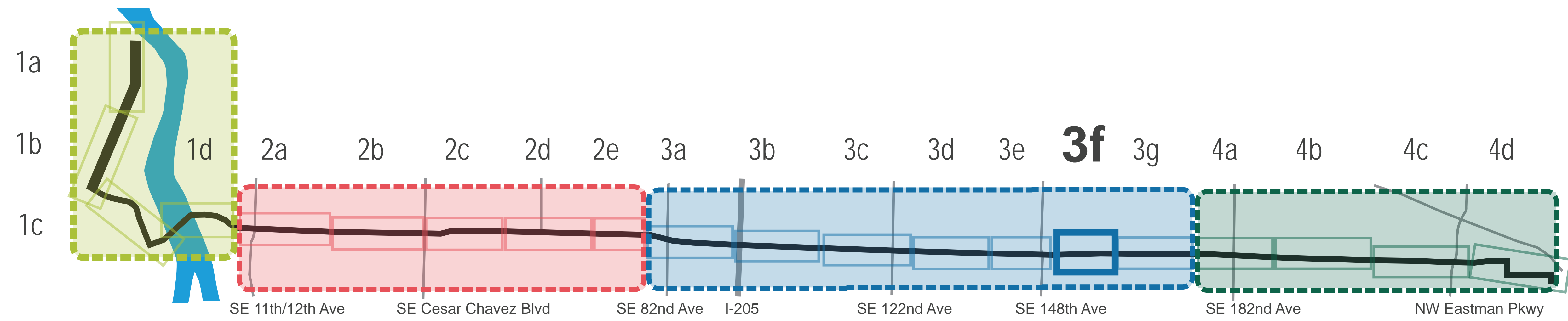
Median Access Control
New Pedestrian Crossing Signal





# SEGMENT 3

OUTER DIVISION • SE 78th Ave to SE 174th



**LEGEND Proposed Design Elements**

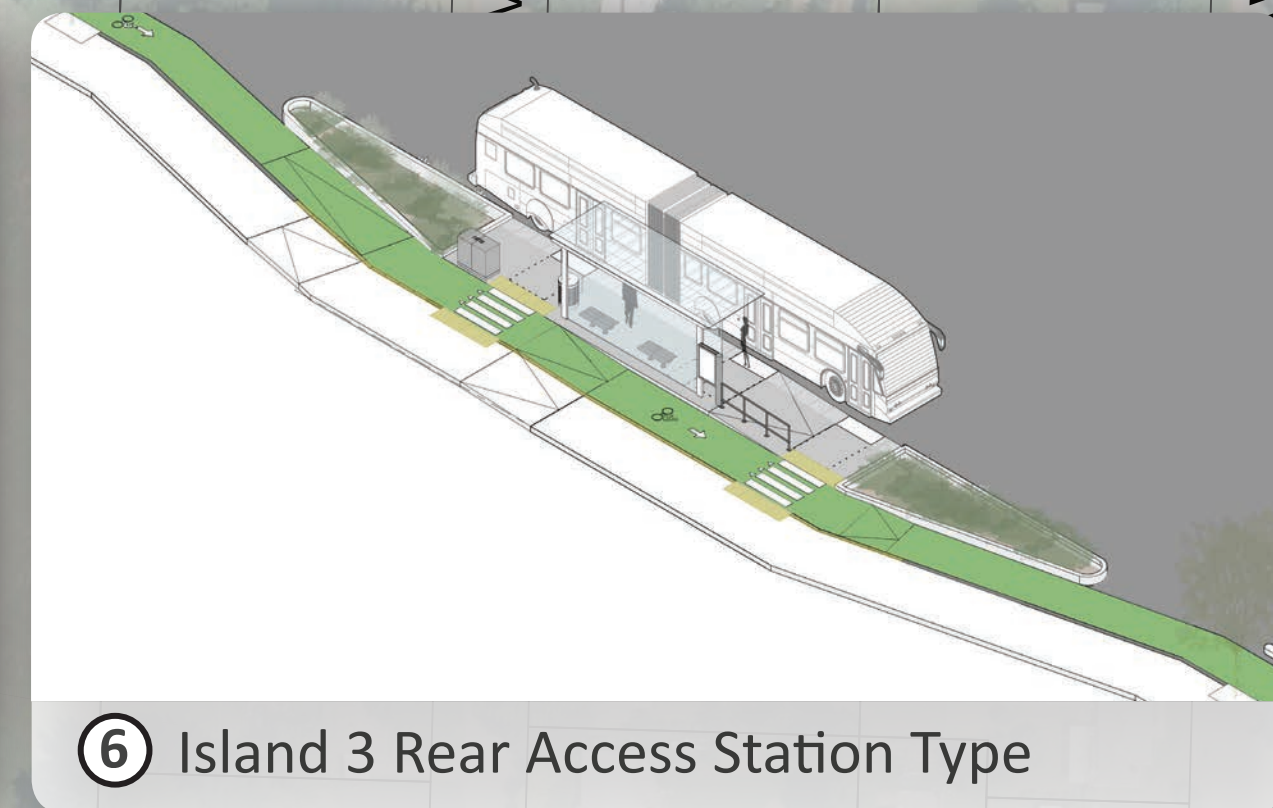
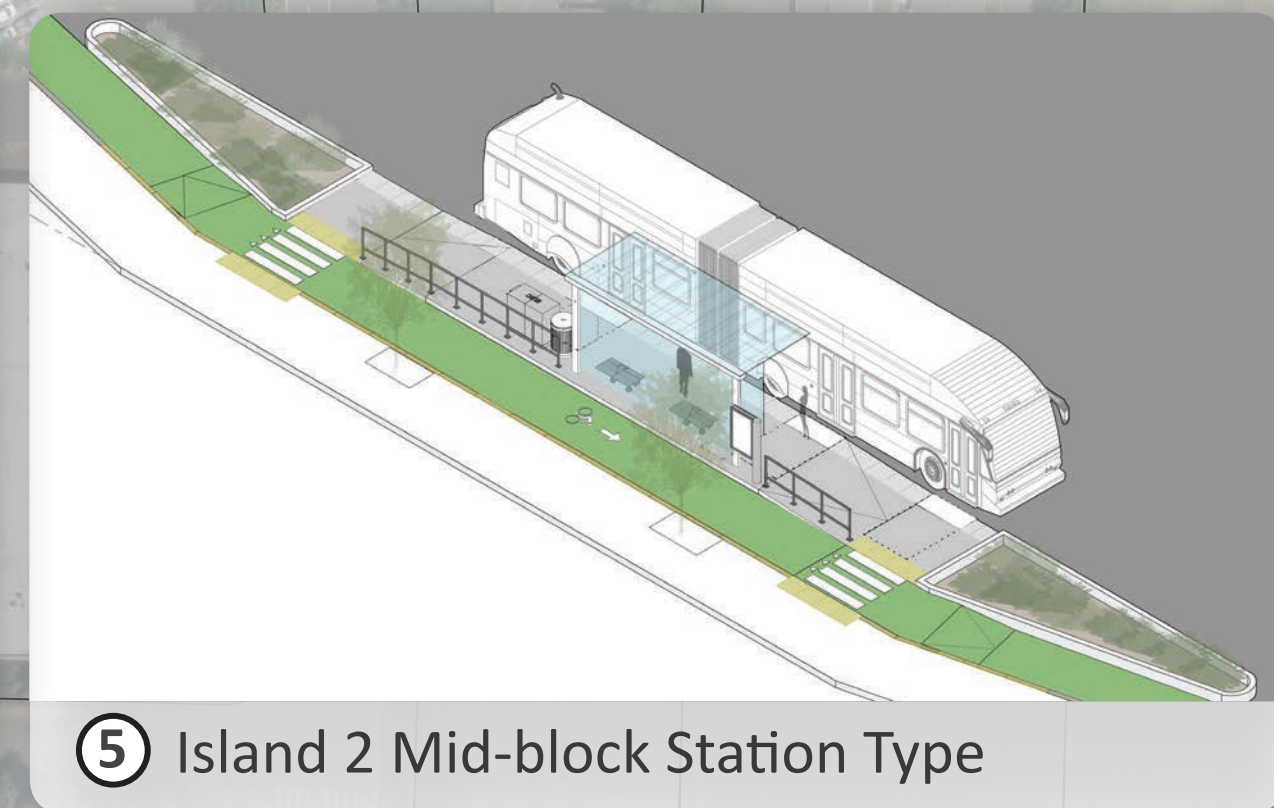
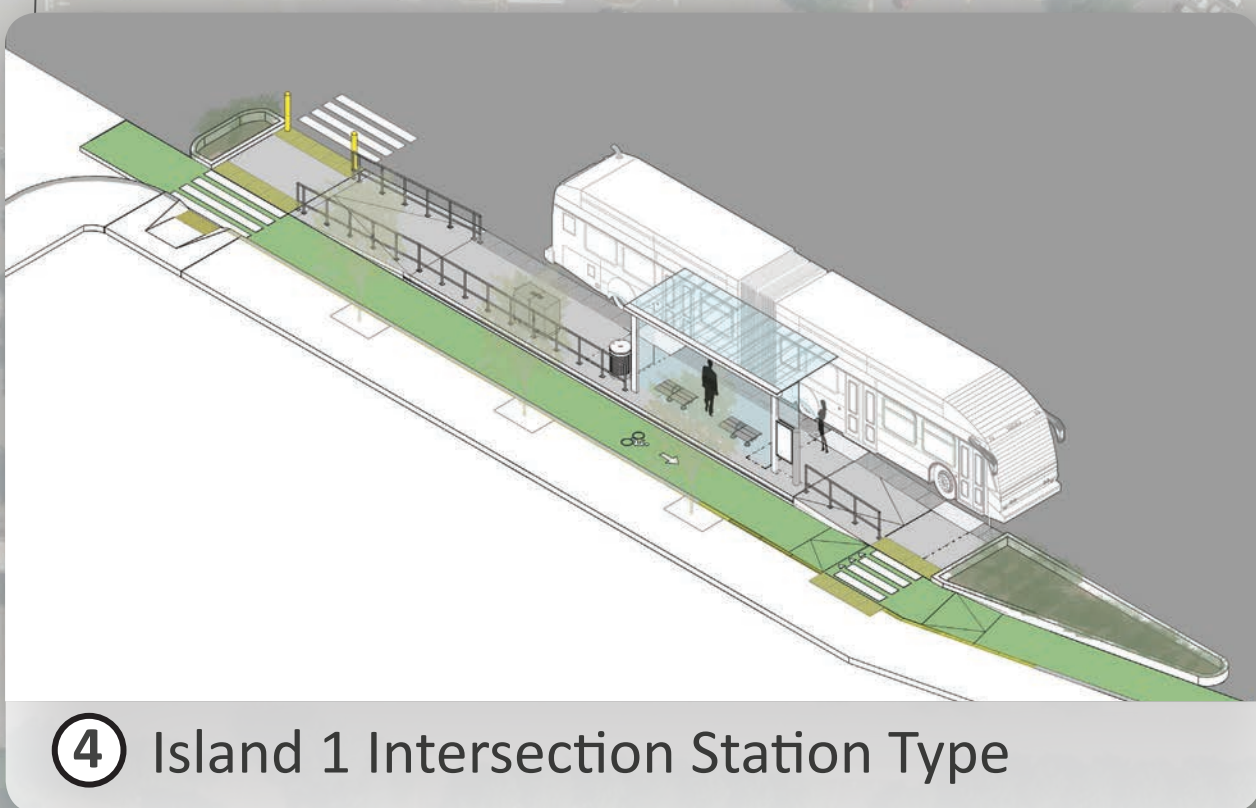
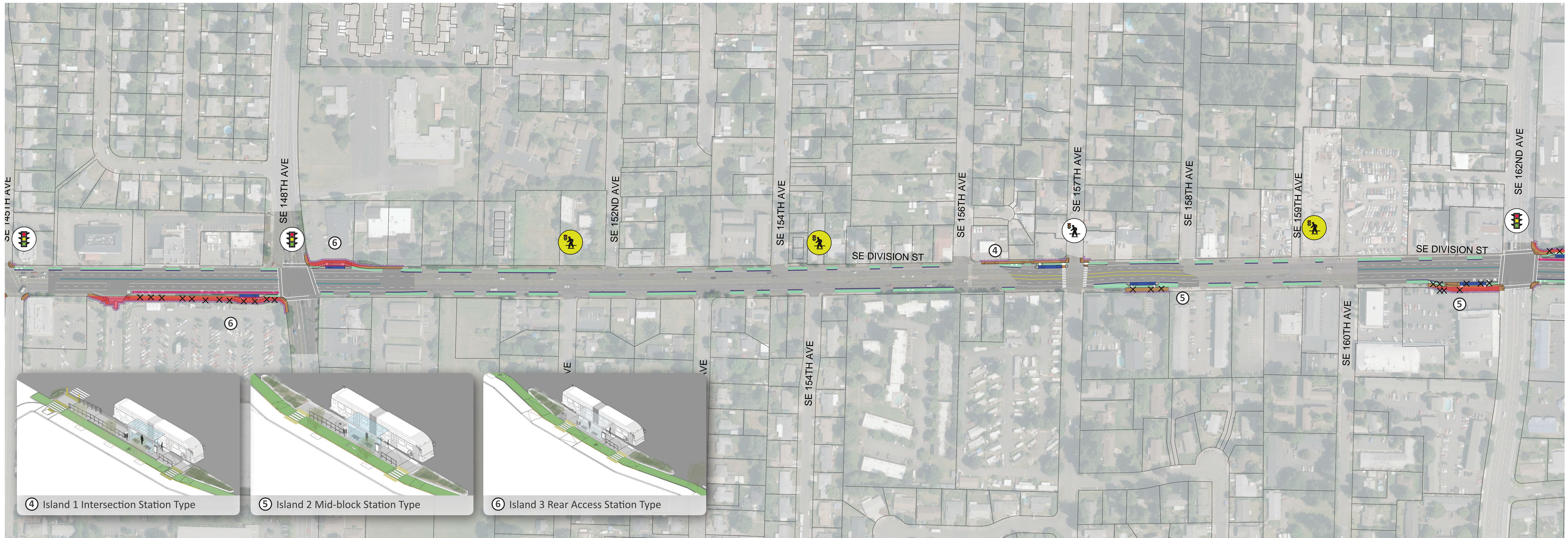
- Bus Station
- Business Access Transit Lane (BAT)
- Protected Bicycle Facility
- Sidewalk/Island
- Bioswale
- Median Access Control
- Downtown Stop
- Downtown Bus Route
- Driveway Closure
- Property Line
- Right-of-Way Acquisition
- Temporary Construction Easement
- Tree Removed
- Signal Improvement
- New Pedestrian Crossing Signal

**Bus Station Types**

- ① Integrated 1 By-pass
- ② Integrated 2 Pass-through
- ③ Integrated 3 Rear Access
- ④ Island 1 Intersection
- ⑤ Island 2 Mid-block
- ⑥ Island 3 Rear Access

**Outer Division Multi-Modal Safety Project Improvements**

- Median Access Control
- New Pedestrian Crossing Signal





# SEGMENT 3

OUTER DIVISION • SE 78th Ave to SE 174th

LEGEND Proposed Design Elements		Bus Station Types		Outer Division Multi-Modal Safety Project Improvements	
Bus Station	Downtown Stop	Integrated 1 By-pass	Island 1 Intersection	Median Access Control	New Pedestrian Crossing Signal
Business Access Transit Lane (BAT)	Downtown Bus Route	Integrated 2 Pass-through	Island 2 Mid-block		
Protected Bicycle Facility	Driveway Closure	Integrated 3 Rear Access	Island 3 Rear Access		
Sidewalk/Island	Right-of-Way Acquisition				
Bioswale	Temporary Construction Easement				
Median Access Control					
	Tree Removed				
	Signal Improvement				
	New Pedestrian Crossing Signal				

