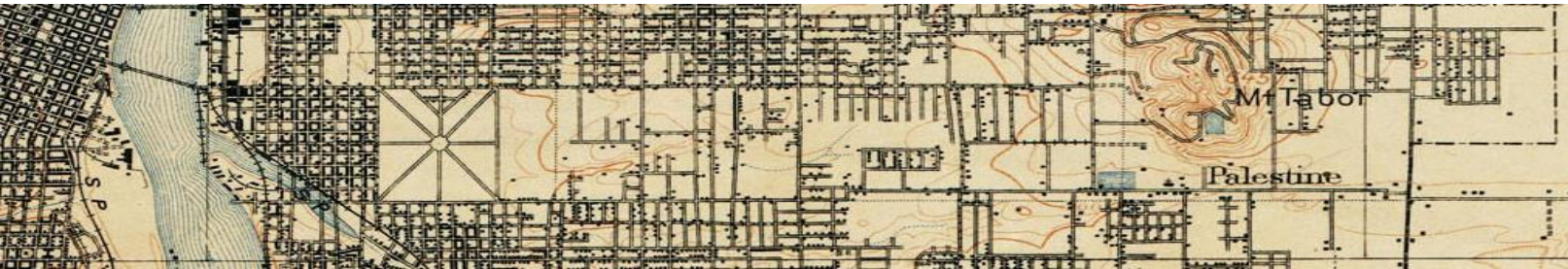


DIVISION

TRANSIT PROJECT



COMMUNITY ADVISORY COMMITTEE

November 21, 2019

BUS OPERATOR BARRIERS









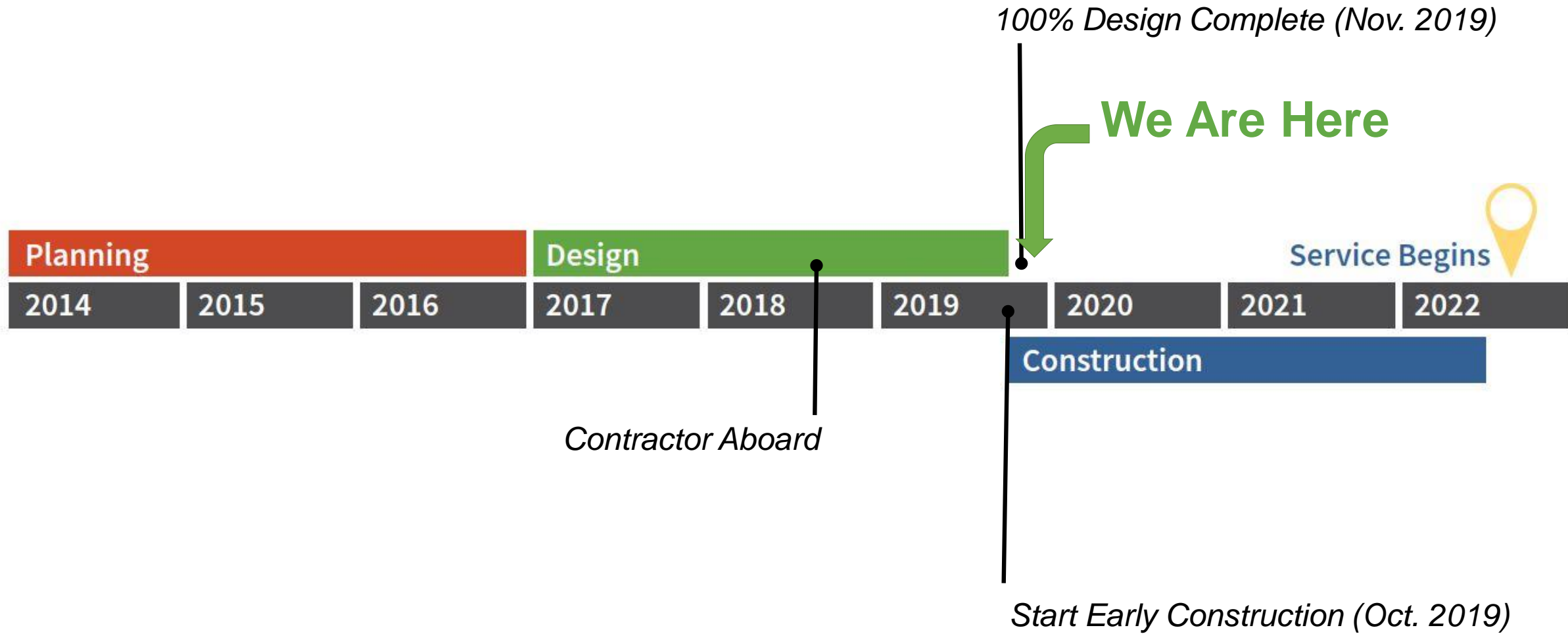
PROJECT UPDATE



Project Update

- Early construction began in October 2019
- 100% Design was completed mid-November 2019
- Anticipated FTA Funding – December 2019
- Private Utilities Start – Late December / January
- Start of Major Construction – January 2020
- Groundbreaking Event – Likely in January 2020

Project Schedule



SHELTER WINDSCREENS



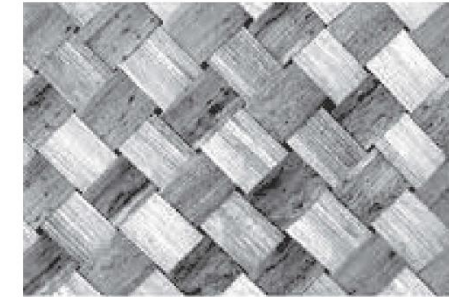
Shelter Windscreen Design Corridor-Wide Pattern

PORTLAND

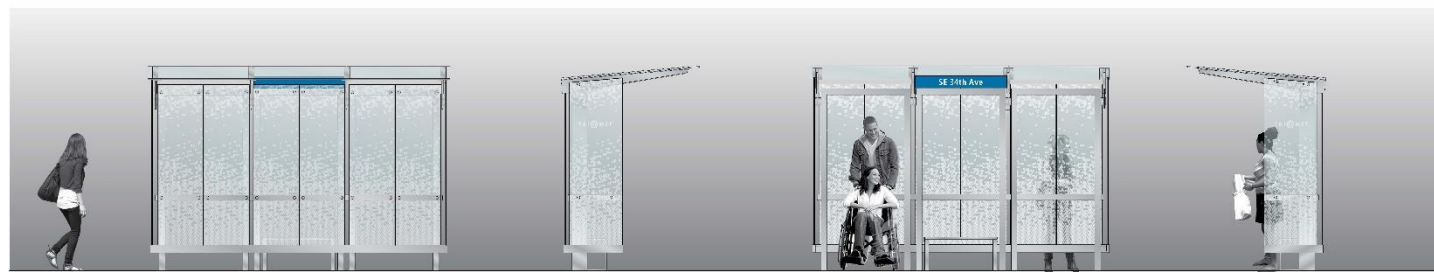
GRESHAM



Scale: 1/2" = 1'-0"



- Reduce graffiti & instances of vandalism
- Ensure safe sightlines
- Custom corridor-wide etch pattern (density weave)



Scale: 3/16" = 1'-0"

92nd/Division (MAX Green Line)



Scale: 3/4" = 1'-0"



Back Side

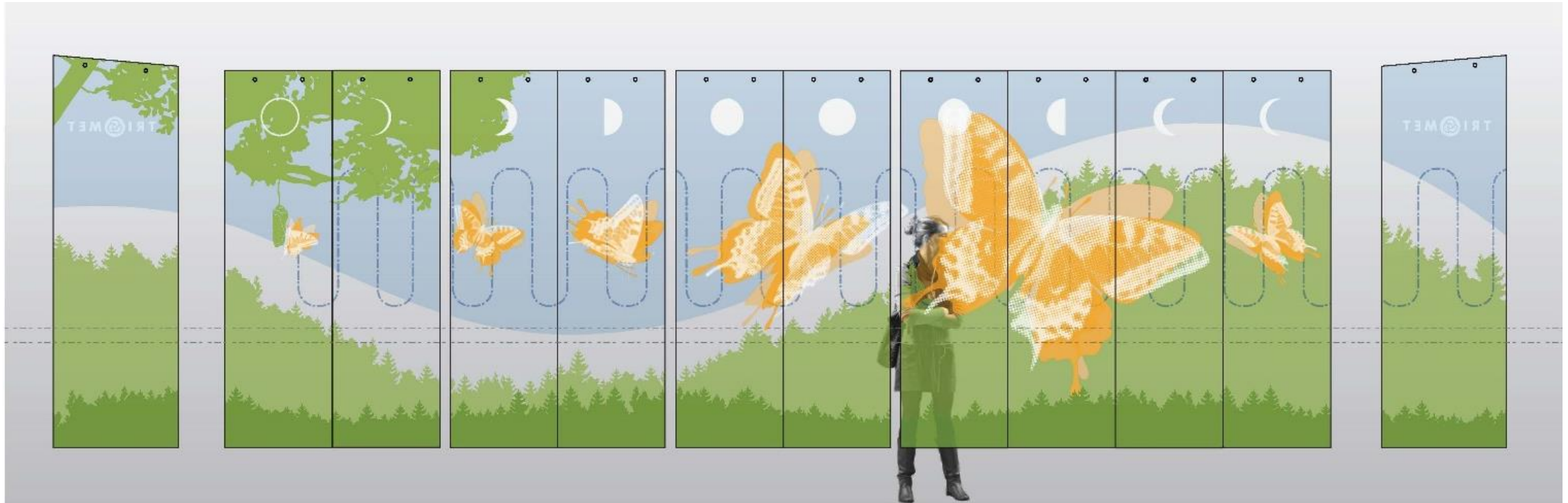
Left Side

Front Side

Right Side

Scale: 3/16" = 1'-0"

122nd/Division



Scale: 1/2" = 1'-0"



Back Side

Left Side

Front Side

Right Side

Scale: 3/16" = 1'-0"

Gresham Central Transit Center



Scale: 1/2" = 1'-0"



Scale: 3/16" = 1'-0"

Back Side

Left Side

Front Side

Right Side

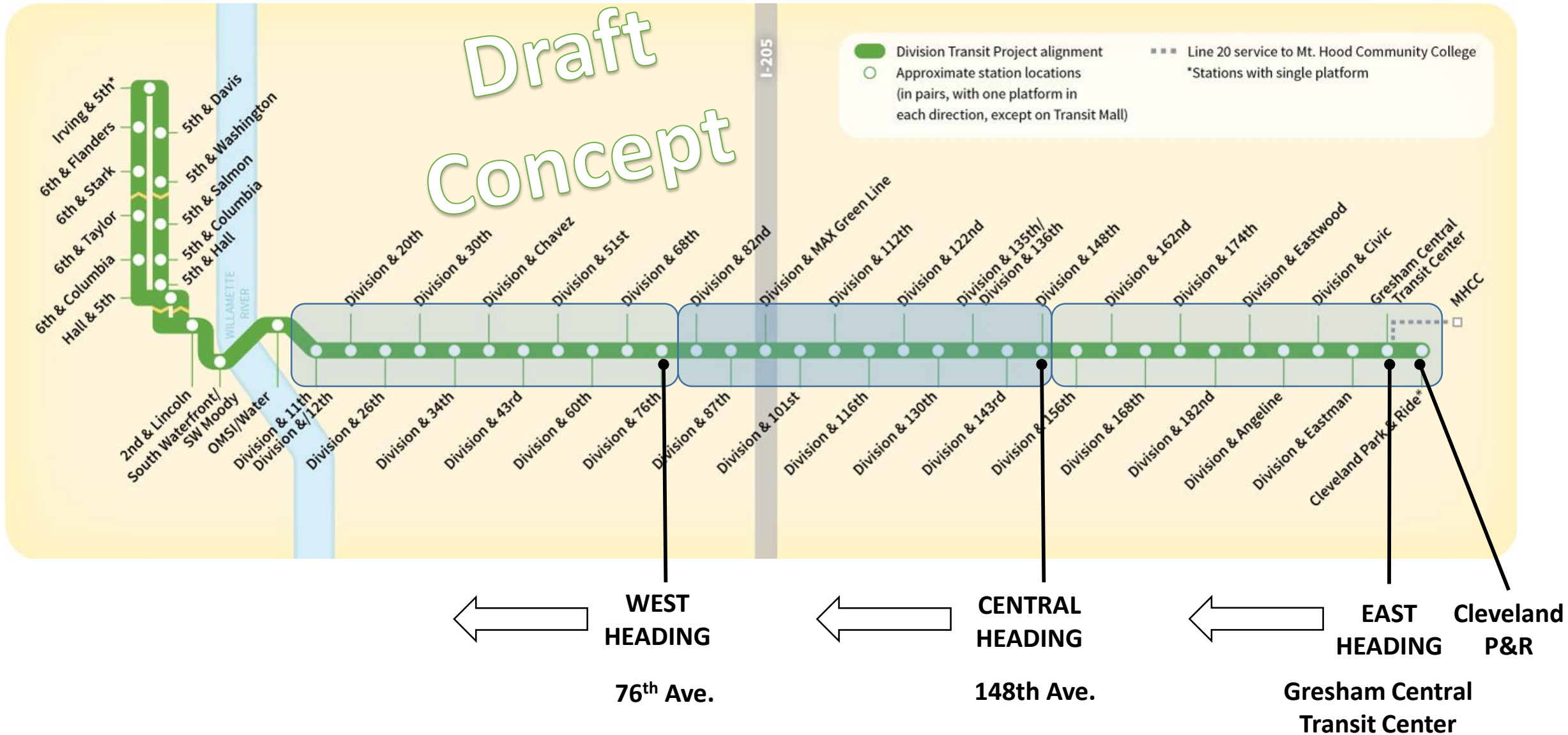
82nd/Division

**DESIGN IN
DEVELOPMENT**

CONSTRUCTION UPDATE



Three Concurrent Construction Zones



Current plans are to move east to west but there may be adjustments.

Early Construction Activities

- Minor underground excavation to identify utilities
- Field Office: December move date anticipated
- Ongoing coordination with Raimore & partner agencies

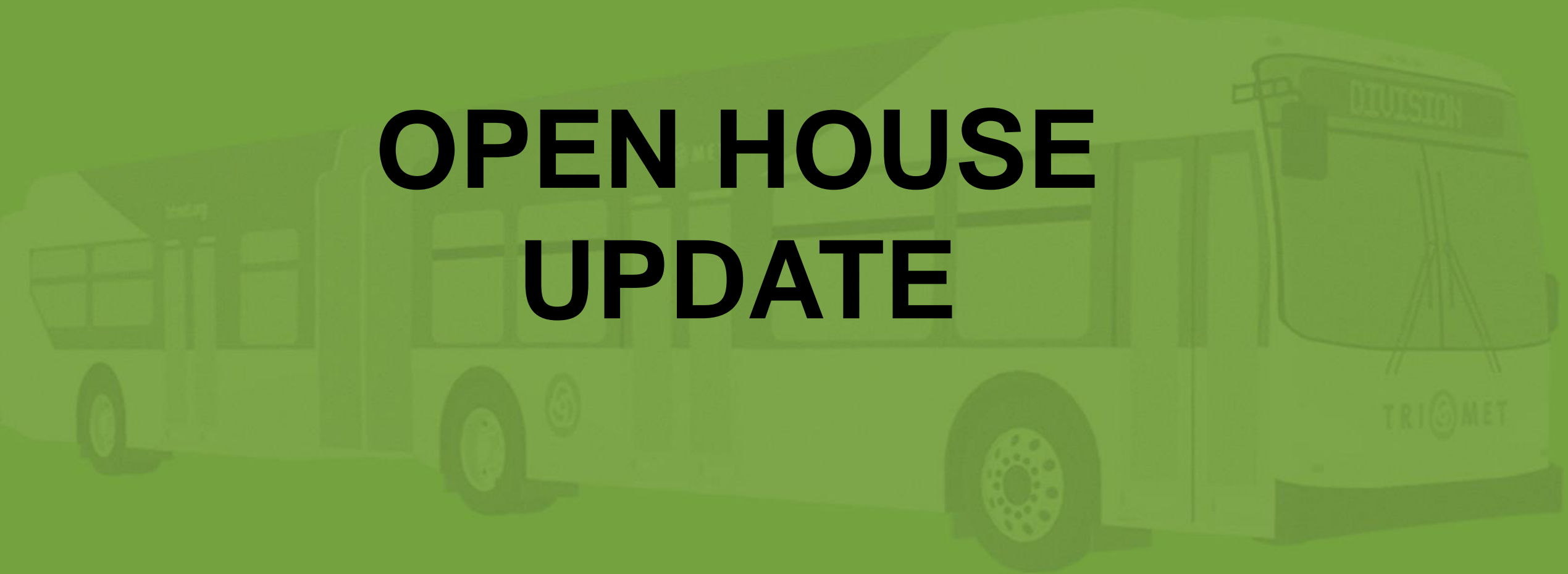


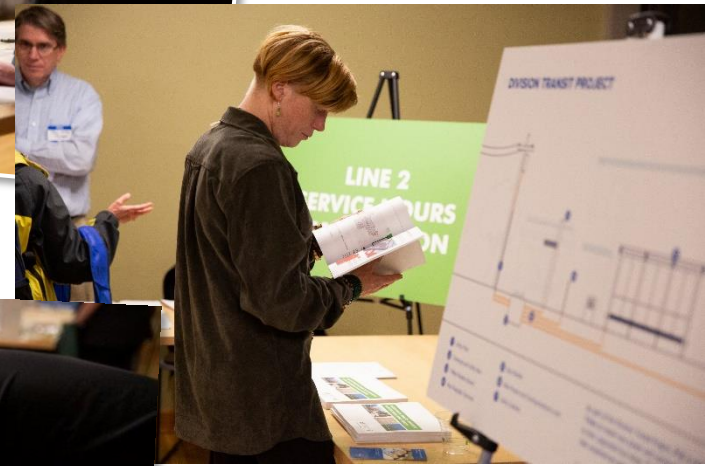
Construction & Community

- Conduct of Construction
- “Division of Possibilities” Corridor Campaign
- Exploring a “One-Stop Shop” Phone Number to direct concerns: TriMet, PBOT, PGE



OPEN HOUSE UPDATE









Open House Feedback

- Good Turnout: numerous community members and a variety of groups and perspectives
- Positive feedback: affirmation of need for project's enhanced service; station design; windscreen designs and inclusive process; bikes inside the bus; new safer pedestrian crossings
- Other feedback: primarily site-specific; support for bus-only lanes; 8th Ave. railroad crossing; safety, equity, and accessibility along transit corridor



Next Steps



- Ongoing stakeholder meetings
- Ongoing construction coordination
- Start of major construction in January

COMMENTS & QUESTIONS

