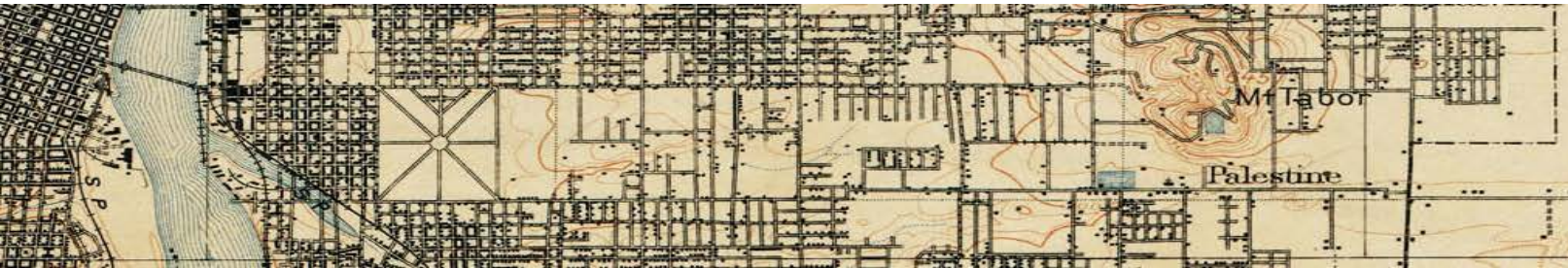


DIVISION

TRANSIT PROJECT



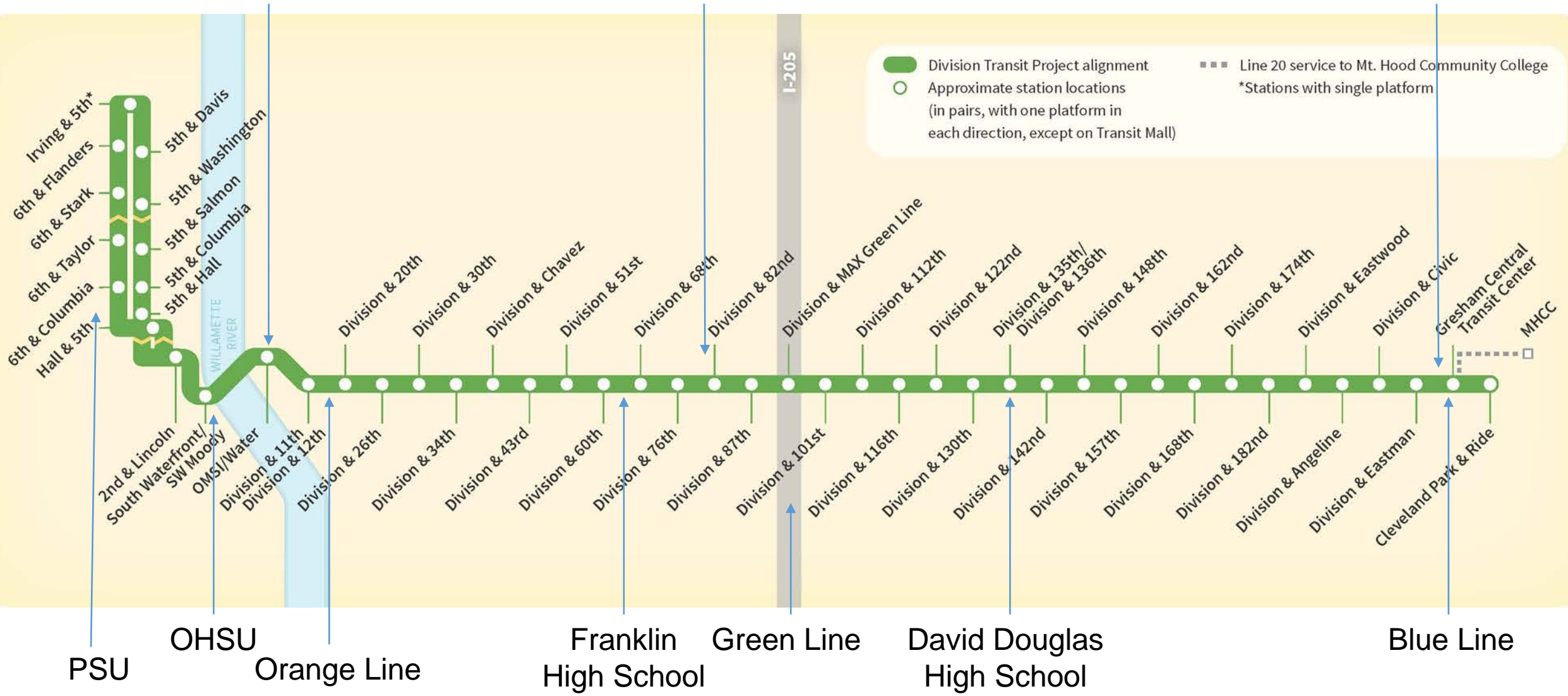
COMMUNITY ADVISORY COMMITTEE

SEPTEMBER 20, 2018

OMSI
PCC Climb Center

PCC East Campus

Gresham High School



Design Update

Project Schedule

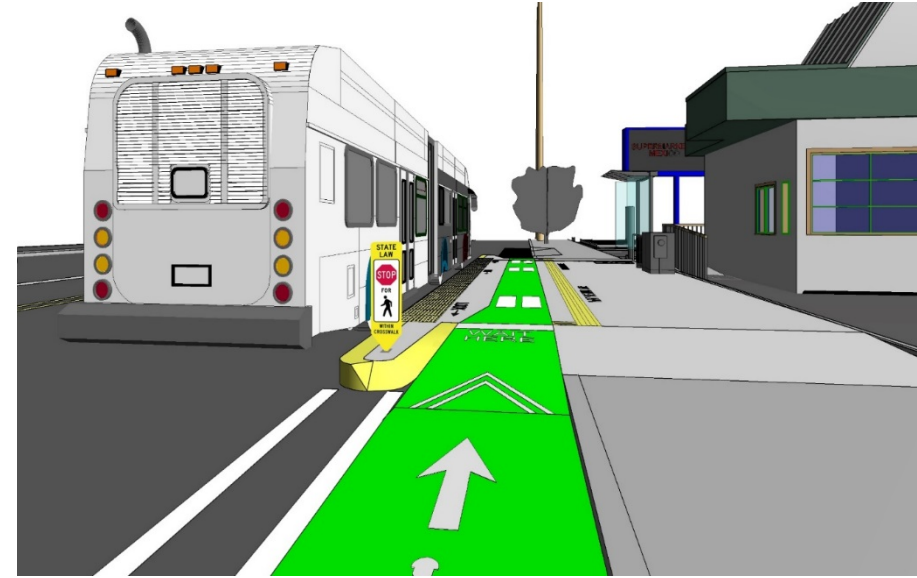
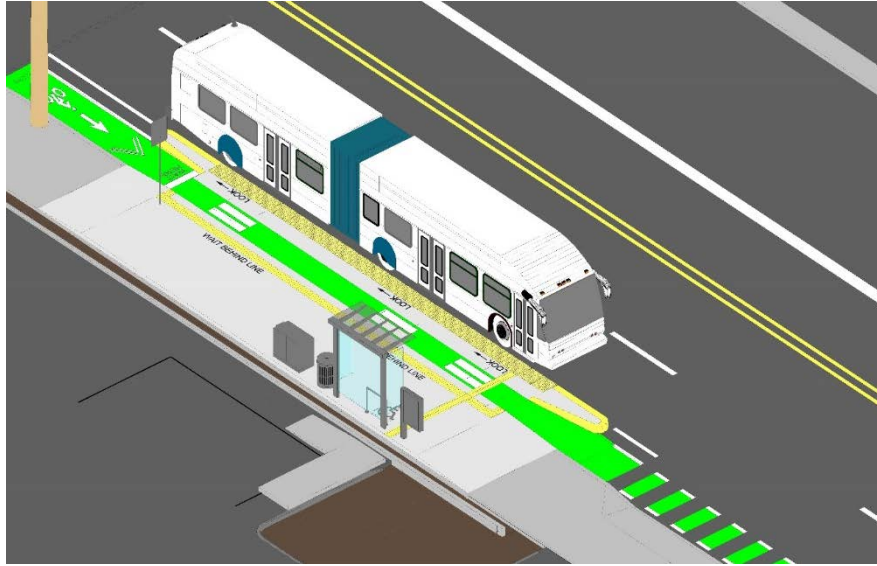


Funding and Federal Rating

FTA Project Rating

- Submitted for rating in September
- 50/50 local/federal match for a more competitive rating
- Rating expected to be medium-high

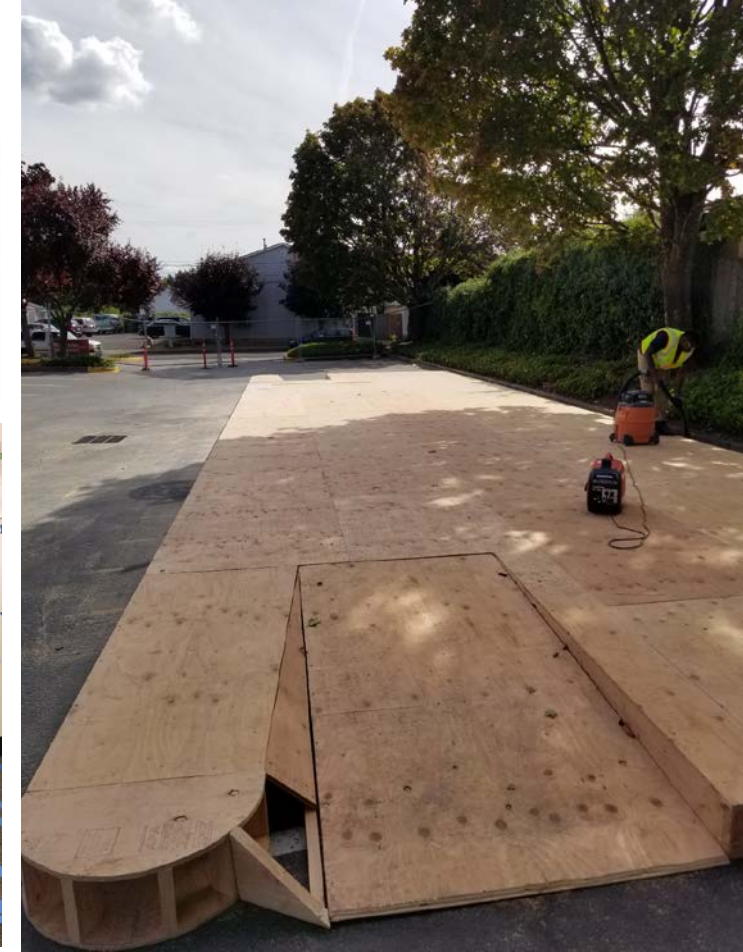
Shared Bike/Pedestrian Stations



- Work within existing ROW
- Create a replicable tool
- Low impacts to private property and utilities

Shared Bike/Pedestrian - Study & Process

- Extensive technical study & analysis effort
- Heavy engagement with stakeholders including BAC, PAC, CAT, GACT, Commission For The Blind
- Testing of mock-up in safe, controlled environment



DTP General Contractor

Raimore Construction



Summer Open Houses

Open House

Total Comments: 337

Online Comments: 306

- 93 Positive
- 130 Shared Ped-Bike Platform
- 38 Pedestrian Bypass
- 9 Pedestrian Pass Through
- 16 Shelters and Amenities
- 17 ADA Concerns



Gresham
Gresham City Hall

Portland
Portland Community College Southeast

Online Open House
June 29-July 12



Top three comments

1. Support and concern for the shared bicycle and pedestrian station type; suggestions for more testing and signage to make sure to reduce possible pedestrian/cyclist conflicts
2. Desire for larger shelters with seating, weather protection and lighting; closer resembling MAX station shelters than bus stop shelters
3. General support of the project and positive feedback on the integrated station types

Questions?

