



[oregonmetro.gov/rtp](http://oregonmetro.gov/rtp)



Metro

2018 Regional Transportation Plan

# Building the Regional Transit Strategy

TriMet Board of Directors

August 9, 2017

# Regional Transportation Plan

Sets the course for moving the region safely, efficiently and affordably for decades to come

Establishes priorities for federal, state and regional funding

Required at least every 4 years



# Our shared vision

*In 2040, everyone in the Portland metropolitan region will share in a prosperous, equitable economy and exceptional quality of life sustained by a safe, reliable, healthy, and affordable transportation system with travel options.*

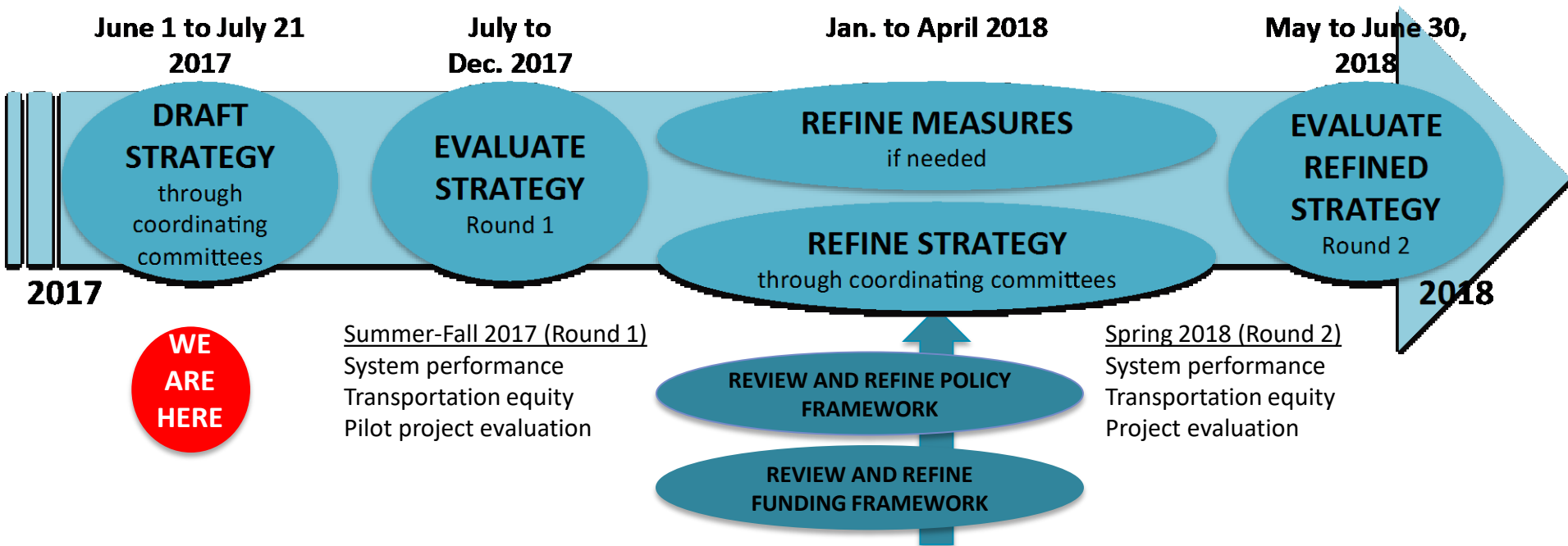


\* Reflects 4/20 JPACT and 4/26 MPAC comments, and subsequent 4/28 TPAC recommendation to JPACT and 5/3 MTAC recommendation to MPAC

# 2018 RTP WORK PLAN

## Process for building strategy

### Timeline for drafting, evaluating and refining the strategy



Safety, transit and freight strategies continue to be developed on parallel tracks and will be informed by the analysis findings and recommendations

# Regional Transit Strategy objectives

- Implement the 2040 Growth Concept and Climate Smart Strategy
- Update RTP transit-related policies and performance measures
- Update and consolidate the current Regional Transit Network Map and High Capacity Transit Map
- Update the Transit System Expansion Policy
- Recommend a coordinated strategy for future transit investments and identify potential partnerships, strategies and funding sources for implementation.

# Regional Transit Network



- Light rail
  - Streetcar
  - Rapid streetcar
  - Inter-city high-speed rail
  - Commuter rail
  - Future High Capacity Transit
  - Frequent bus
  - Regional bus
  - bike-transit facility
  - Inter-city bus passenger terminal
  - Inter-city rail passenger terminal
  - Transit centers / Major bus stops
  - Inter-city air passenger terminal
  - Urban centers
  - Employment
  - Industry
  - Urban growth boundary
  - County boundary
- (dotted lines are proposed projects and do not identify specific alignments)



TriMet is working with communities across the region to develop Service Enhancement Plans updating the vision for the regional transit network, including local and community-based services. This map reflects the vision for the Westside (Beaverton to Forest Grove), which has been completed. The next RTP will include the visions developed in the other areas of the TriMet district.



**Climate Smart Strategy**  
for the Portland metropolitan region

[oregonmetro.gov/climatestrategy](http://oregonmetro.gov/climatestrategy)

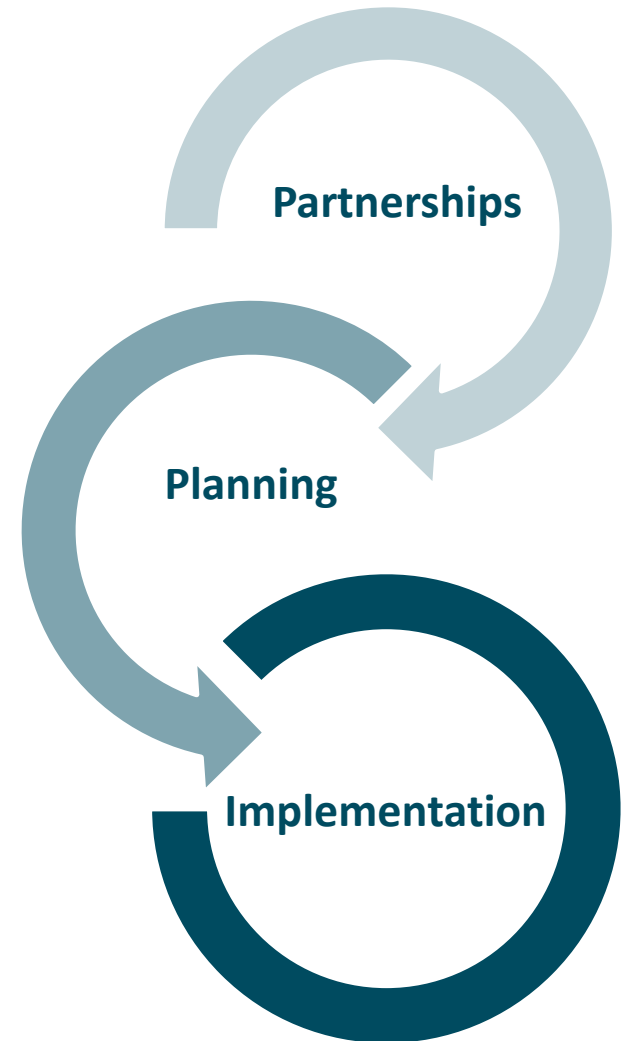
**2014**

**2014  
REGIONAL  
TRANSPORTATION  
PLAN UPDATE**



# Regional Transit Vision

To make transit more frequent, convenient, accessible and affordable for everyone



# Make transit more frequent by...

Implementing transit providers service plans

Investing in capital improvements

Implementing TriMet's Coordinated Transportation Plan

Coordinating with local and regional land use and transportation visions





# Make transit more convenient by...

Implementing transit providers service plans

Investing in capital improvements

Investing in maintenance and bottlenecks

Improving connections

Implementing/coordinating the HOP

Fastpass

Investing in transit technology

Expanding policies to increase transit usage

Improving route and schedule information



# Make transit more accessible by...

Providing/coordinating safe walking and biking to transit

Providing new transit connections

Enhancing access to jobs and other daily needs

Coordinating shared mobility and ride-sourcing

Coordinating transit-oriented development and Equitable Housing strategies

Coordinating local and regional land use and transportation visions



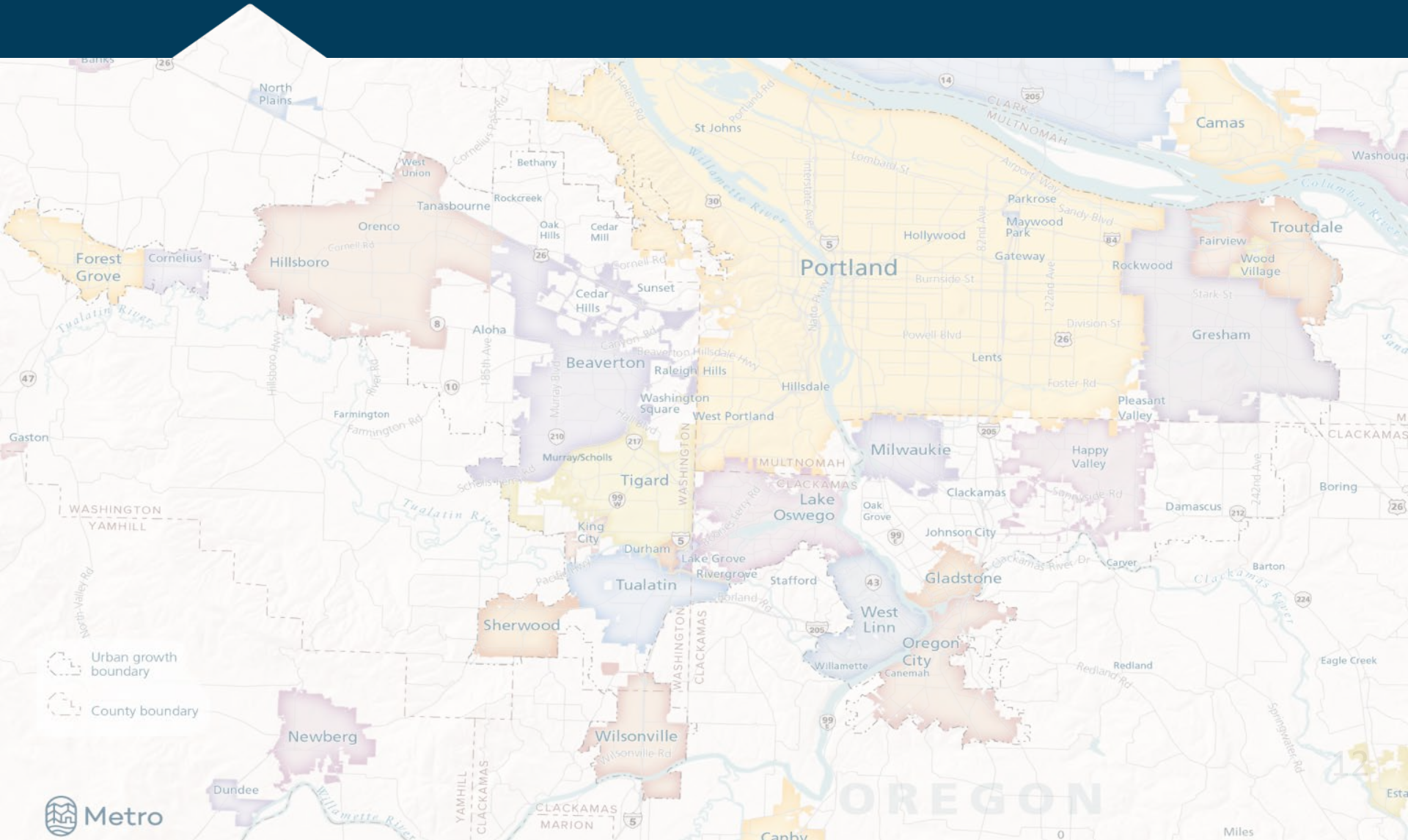
# Make transit more affordable by...

Implementing the low-income fare TriMet/Metro Task Force recommendation

Expanding transit payment options (e.g., fare capping on HOP Fastpass)



# Building the Regional Transit Strategy



# REGIONAL TRANSIT SPECTRUM

Mixed traffic

Priority treatments

Exclusive guideway

Local buses

Regional bus

Frequent Service bus

Streetcar

Corridor based Bus Rapid Transit

Bus Rapid Transit

Rapid Streetcar

Light Rail

Commuter Rail

Service Enhancement Plans/Master Plans

Enhanced Transit Corridors

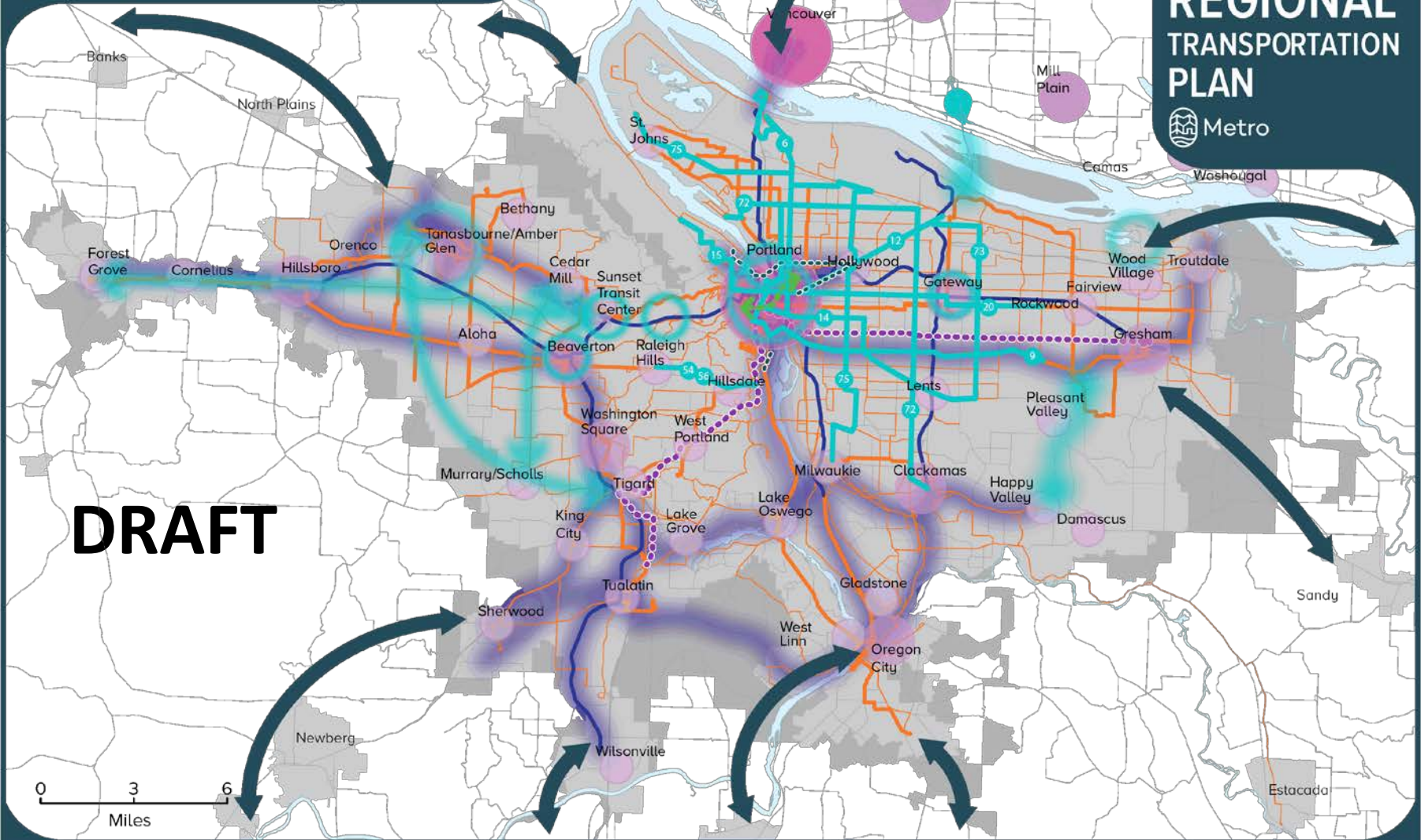
Tram

Transit Capital Investments  
(HCT)

High Capacity Transit

# Ideas for building a regional transit vision...

# 2018 REGIONAL TRANSPORTATION PLAN



**DRAFT**

- Metropolitan planning area
- Urban growth boundary
- City center
- Regional center
- Town center
- High capacity transit
- Future bus
- Future frequent bus
- HCT Project Development
- Futur/potential HCT corridor
- Neighboring transit
- Potential streetcar
- Potential enhanced transit corridors
- Potential tunnel
- New ideas to consider

Note: includes HCT Corridors and Tri Met's Service Enhancement Plans

# Transit supportive elements

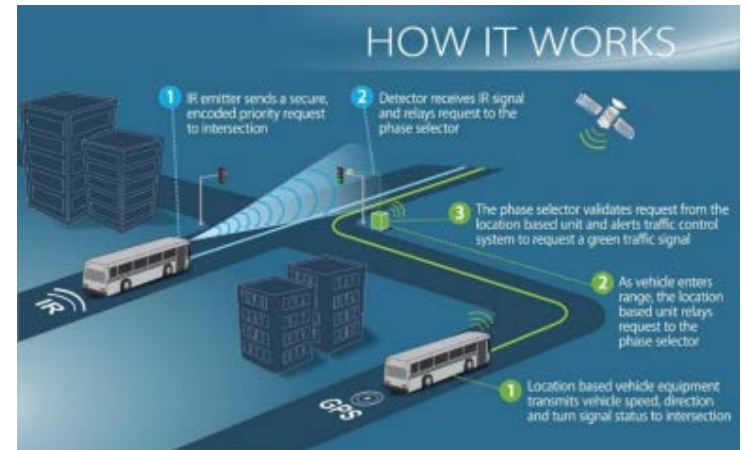
## Shared Mobility



## Programs, policies and plans



## Technology



## Access to transit



# Transit System Expansion Policy

## Updating the Transit System Expansion Policy:

Apply to projects seeking federal FTA Capital Investment Grant (CIG) funding (commuter rail, light rail, BRT, corridor-based BRT, streetcar...)

Simplify existing criteria

Ensure local support

Guide the decision-making process for transit capital project prioritization





# Transit System Expansion Policy

## Assessment:

Mobility and ridership

Land use supportive and market potential

Cost effectiveness

Equity benefit

Environmental benefit

## Readiness:

Commitment/partnerships

FTA competitiveness





**New!**

# What is Enhanced Transit?

# Characteristics of Enhanced Transit

- Increased capacity, reliability and transit travel speed
- Moderate capital and operational investments
- Flexible and context sensitive
- Can be deployed relatively quickly
- Could be a hot spot, corridor or full line
- Can include bus or streetcar

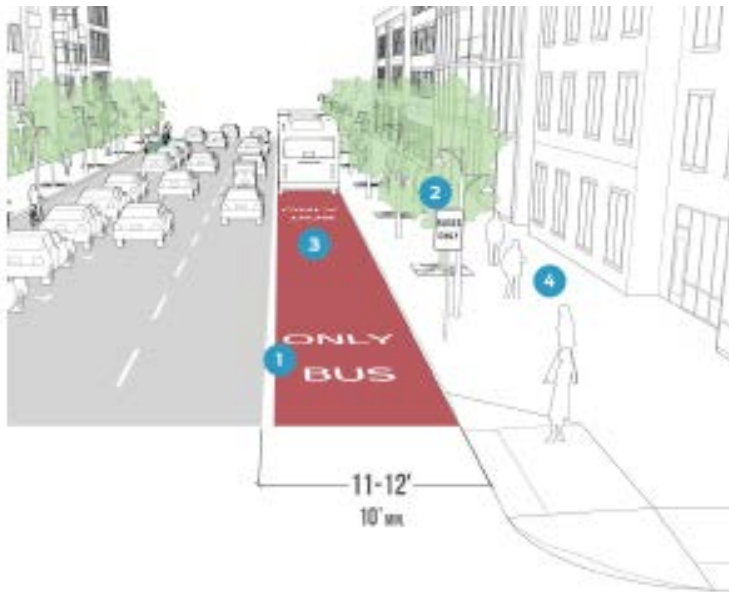


The Vine recently opened in Vancouver, WA



# Laneways and Intersection Treatments

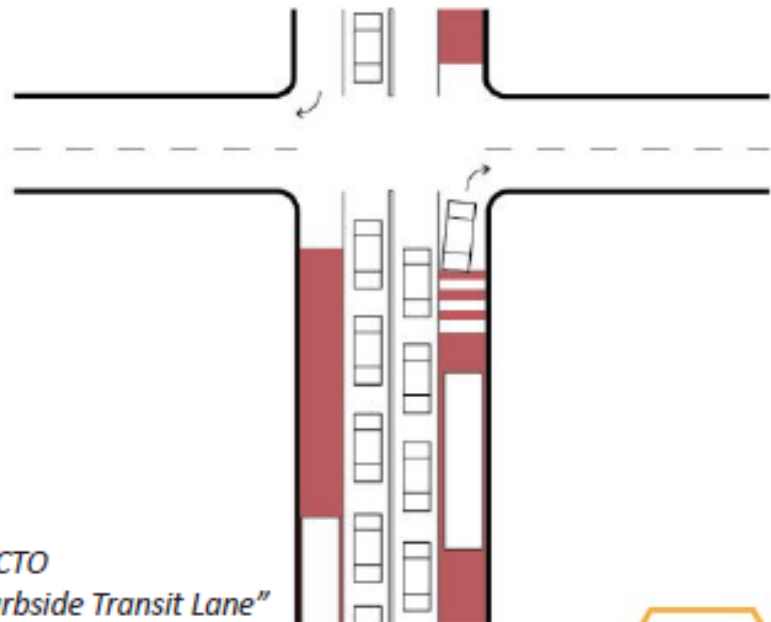
## Dedicated Bus Lane



NACTO "Curbside Transit Lane"



## Business Access and Transit (BAT)



NACTO "Curbside Transit Lane"



# Laneways and Intersection Treatments

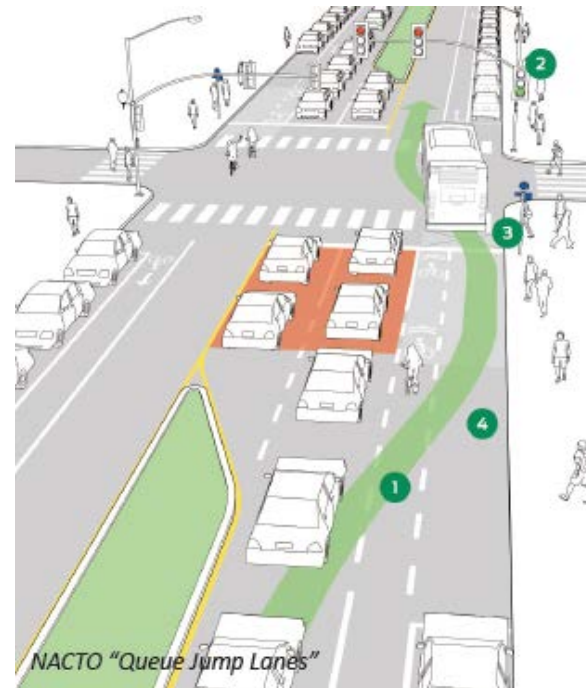
Pro-Time (Peak Period Only) Transit Lane



SE Madison morning peak hour



Intersection Queue Jump/Right Turn Except Bus Lane

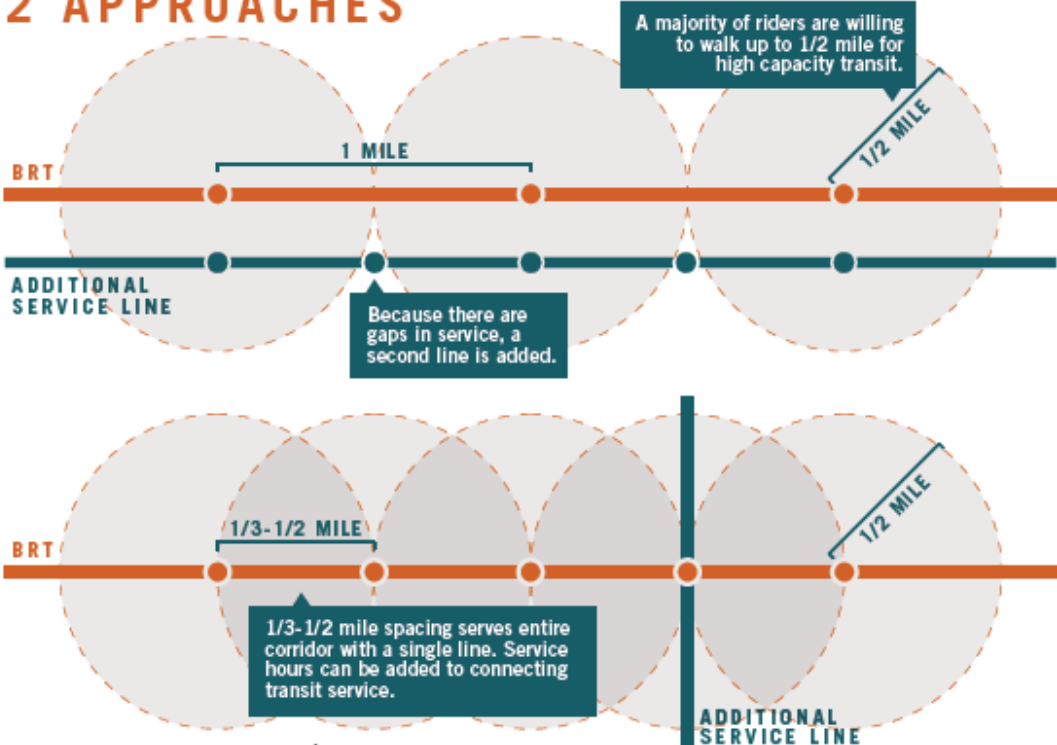


# Stops and Stations

## Bus Stop Consolidation



### STOP-SPACING TRADEOFFS 2 APPROACHES



# A Model: 122<sup>nd</sup> Ave TriMet Partnership



- TriMet commitment to provide Frequent Service along 122<sup>nd</sup> Ave, Bus line 73.
- City of Portland commitment to fund and build safety and access to transit improvements.
- Status: Several projects funded and in design. Construction in 2017 and 2019.



**Improved!**

# Why Enhanced Transit?

*Answer:*

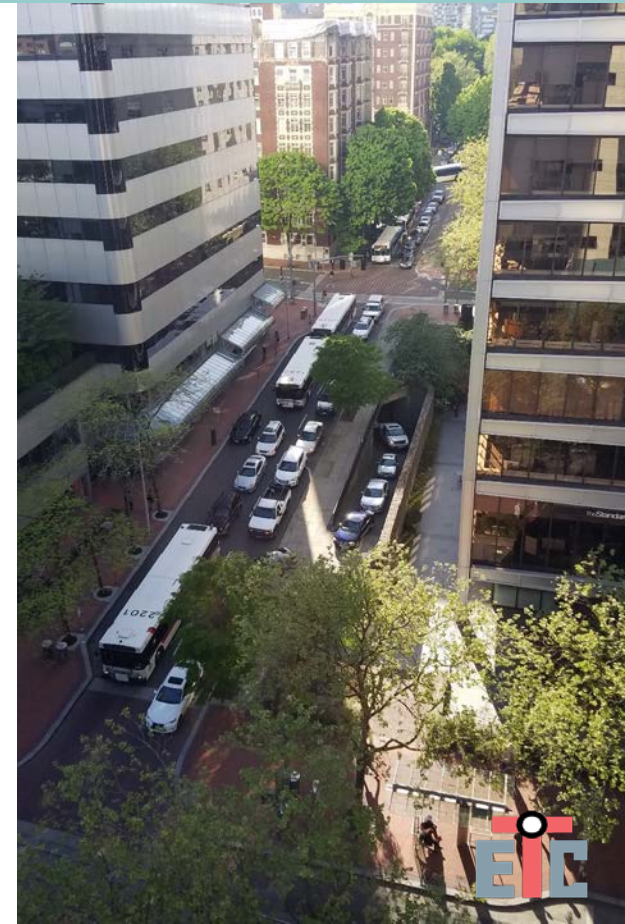
**We need to do more to support transit in Portland.**





# Enhanced Transit Plan Goals (TGM grant)

- Increase transit ridership and improve experience of current riders.
- Support planned growth consistent with the 2035 Portland Comprehensive Plan.
- Define and identify “Enhanced Transit Corridors” in Portland.
- Establish a program with clear and objective operational performance measures and thresholds to define what success looks like.
- Guide prioritization of capital and operational investments to achieve success.



# Initial Evaluation: Criteria and Measures

- **Ridership:** Average Existing Weekday Transit Trips
- **Reliability:** Delay due to traffic congestion
- **Transit Speed:** Where buses are slower all day
- **Dwell Time:** When the doors are open at bus stops
- **Equity:** Higher number of People of Color, Low Income, Limited English Proficiency
- **Growth:** Forecasted increase in population and jobs

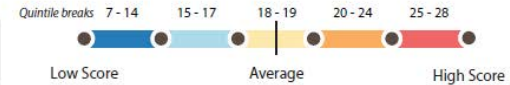




## Enhanced Transit Corridors Plan Methodology Total Score

### Legend

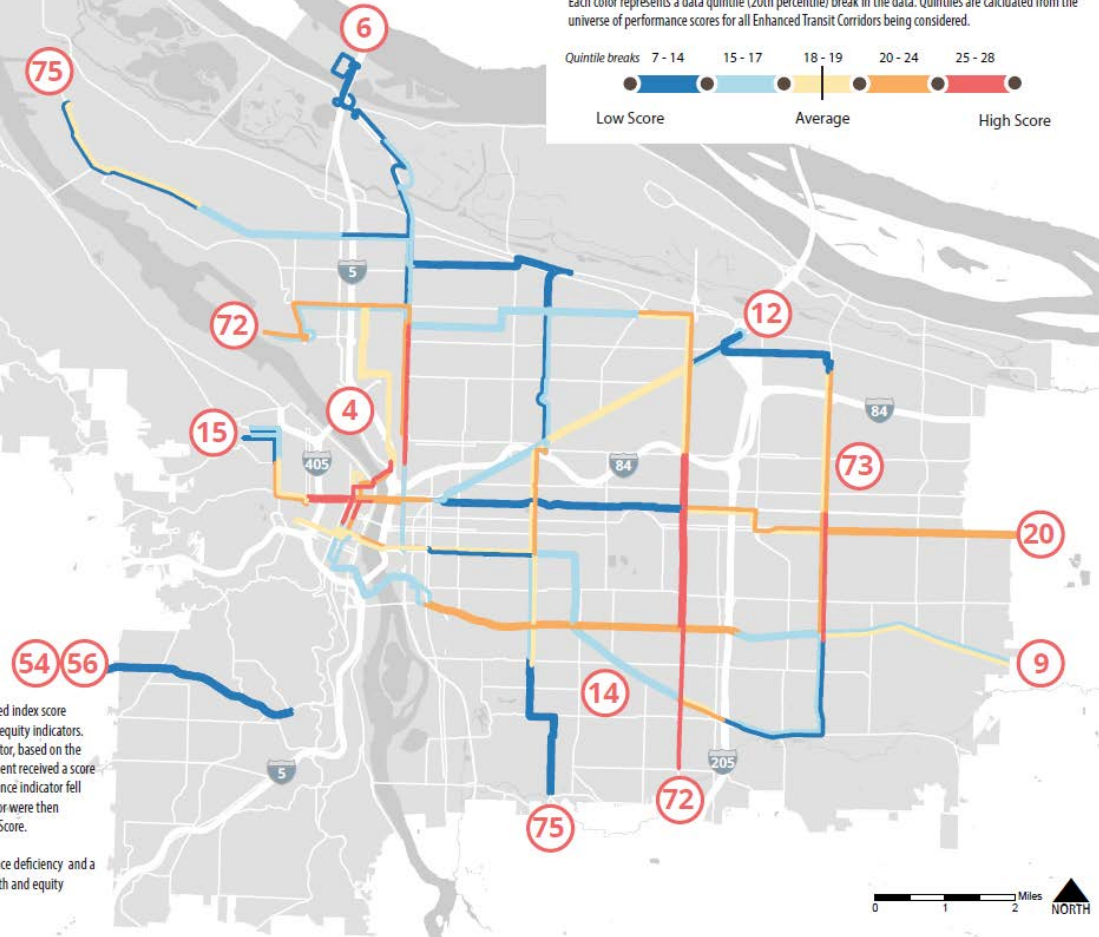
Each color represents a data quintile (20th percentile) break in the data. Quintiles are calculated from the universe of performance scores for all Enhanced Transit Corridors being considered.



### Notes



1. The Methodology Total Score reports an aggregated index score comprising transit performance, future growth, and equity indicators. Five percentile breaks were identified for each indicator, based on the indicator values for all ETC segments. Each ETC segment received a score between 1 and 5, depending on where the performance indicator fell within the percentile breaks. Scores for each indicator were then aggregated for each ETC segment to produce a Total Score.

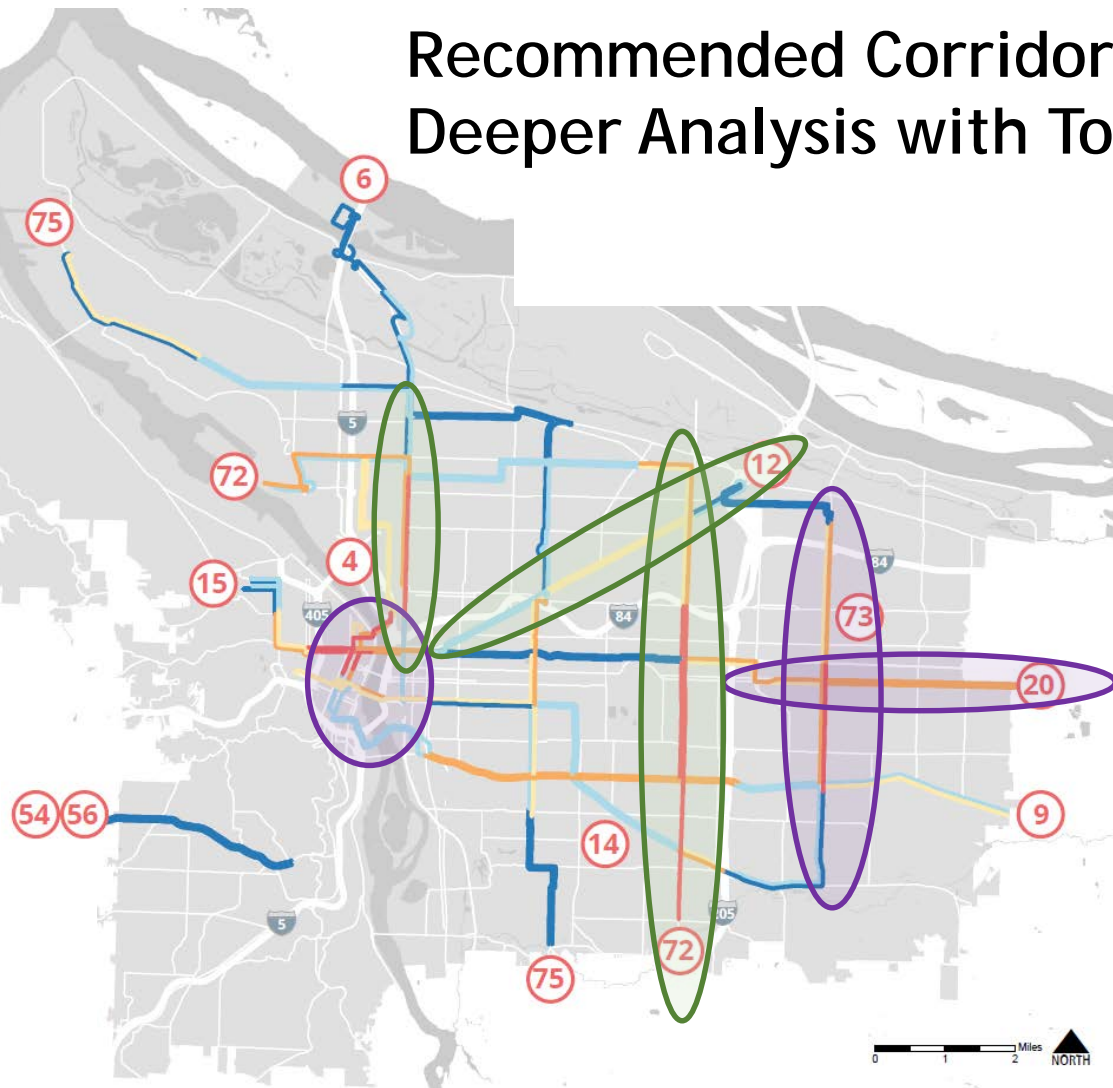
2. A higher score indicates greater transit performance deficiency and a greater need for improvement based on future growth and equity considerations.





# Recommended Corridors for Deeper Analysis with Toolbox

-  Closer look with ETC Consultant Team (up to 3 corridors)
-  Closer look through other upcoming plans/projects



# Enhanced Transit Plan Next Steps

- Plan Elements
  1. Test toolbox in select corridors and identify potential actions and investments
  2. Define success & acceptable levels of service
  3. Include on-going performance measures and thresholds for action
- More public outreach in fall 2017
- Return to Portland City Council with recommendations:
  1. Adopt a plan
  2. Establish an Enhanced Transit Program



# TriMet's 2018 RTP Project List

- Three different categories

- 2018-2027 Financially Constrained
- 2028-2040 Financially Constrained
- 2028-2040 Strategic

- List of major capital projects

- Does not include service enhancements that do not require capital investment
- Does not include operating capital associated with service enhancement (e.g., fleet, facilities, infrastructure, IT, equipment, safety & security)
- Working with OTC/ODOT to understand new process for new service funding and develop conceptual framework for those investments and add into the RTP

# TriMet's 2018 RTP Project List

- 2018-2027 Financially Constrained Projects
  - Southwest Corridor: Project Development
  - Southwest Corridor: Capital Construction
  - MAX Red Line Extension (new)
  - Division Transit Project: Project Development
  - Division Transit Project: Capital Construction
  - NE Sandy Blvd Enhanced Transit Project (new)
  - NE MLK Jr Blvd Enhanced Transit Project (new)



# TriMet's 2018 RTP Project List

- 2028-2040 Financially Constrained Projects
  - Portland to Vancouver Light Rail
  - Steel Bridge Bottleneck Improvements
  - TV Hwy Enhanced Transit Project
  - SW Beaverton-Hillsdale Hwy Enhanced Transit Project (new)
  - SE Hawthorne/Foster Enhanced Transit Project (new)
  - East Burnside/SE Stark Enhanced Transit Project (new)
  - 82nd Ave/Killingsworth Enhanced Transit Project (new)

# TriMet's 2018 RTP Project List

- 2028-2040 Strategic Projects

- WES Double Tracking and Frequency Upgrades
- SE Powell Blvd Transit Project (new)
- SE Belmont Enhanced Transit Project (new)
- Lombard/Cesar Chavez Enhanced Transit Project (new)
- Columbia to Clackamas Enhanced Transit Project (new)
- Central City Transit Capacity Project (new)

# Other Transit projects on RTP Project List

- Projects submitted by other jurisdictions
  - 122nd Ave Transit Enhancements (2017-2028 FinCon)
  - North Hillsboro/Amberglen Streetcar (Strategic)
  - McLoughlin BRT (Strategic)
  - Forest Grove HCT Extension (Strategic)
  - Sunset Highway Express Service (Strategic)
  - I-205 Commuter Bus (Strategic)
  - Columbia to Clackamas Enhanced Transit Project (Strategic)
  - Transit Priority on future Frequent Service Routes in SEP (Strategic)

# Questions/Discussion