

HB 2017 Transit Advisory Committee

May 18, 2018

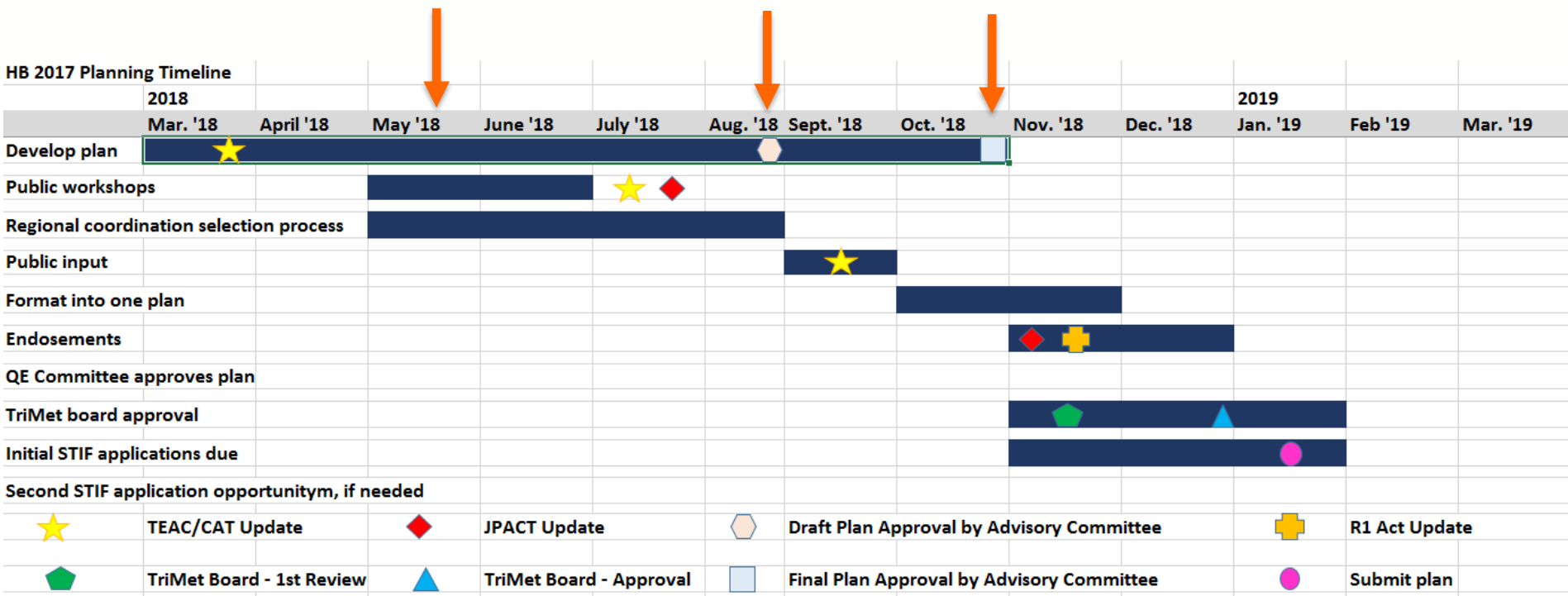
Meeting Agenda

Welcome & Introductions	2 min.
Agenda & Timeline	3 min.
Public Comment	15 min.
High Poverty/Equity Definition Discussion	30 min.
Regional Coordination Selection Process	20 min.
Transit 101	20 min.
Public Workshop Reminder	2 min.

HB2017 Planning Timeline

We are here

Important dates



Public Comment



High Percentage Poverty

Prior Meetings

- Reviewed several means of viewing poverty
 - Various percentages
 - Raw numbers
 - People per acre
- Requests
 - Destinations
 - Level of service overlay
 - Education centers
 - Senior and disabled services

Equity Index

Four step process

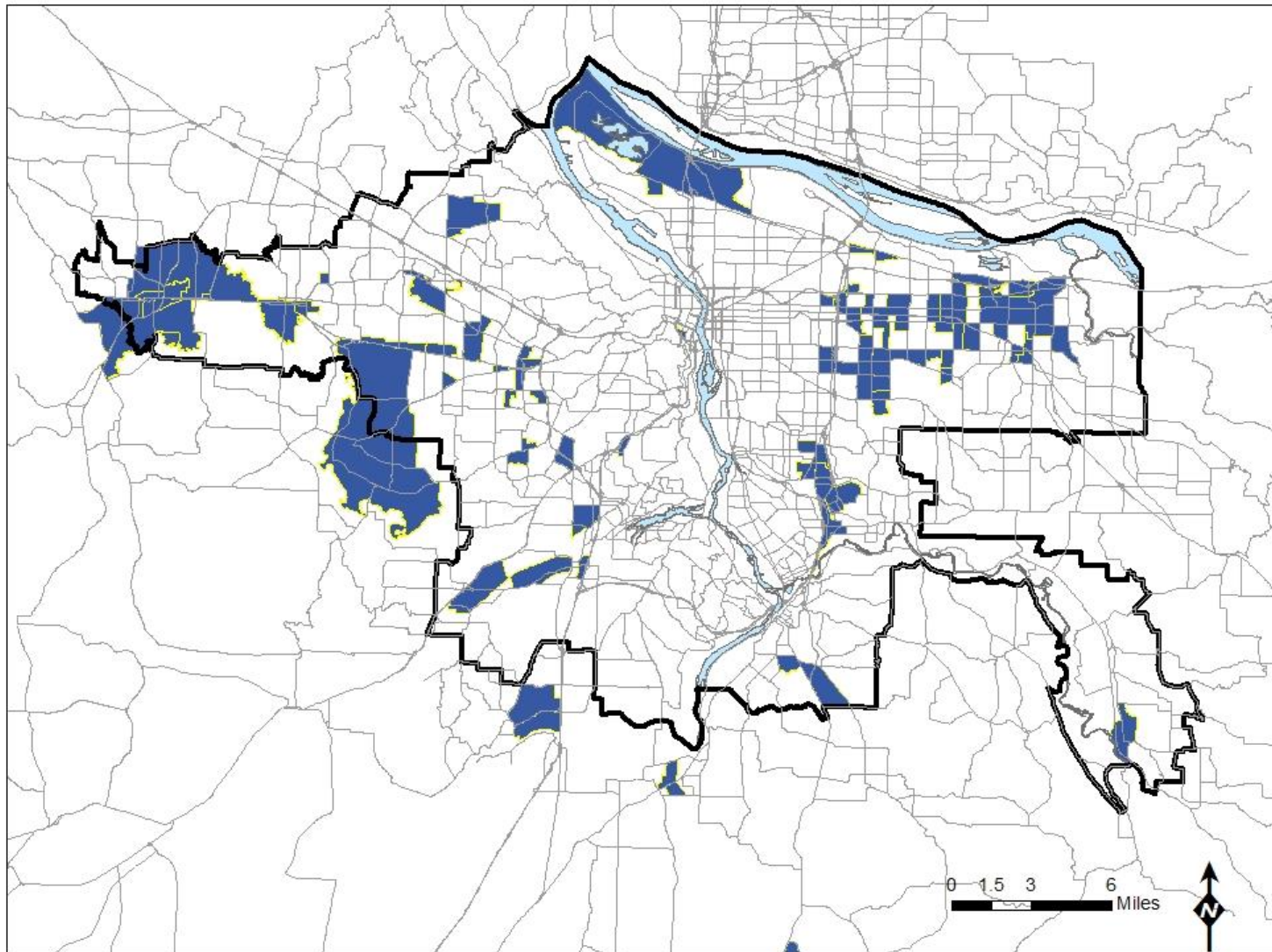
1. Use 10 factor analysis to determine where high concentrations of poverty are located
2. Determine destinations for high poverty origins
 - i. Employment
 - ii. Schools/Colleges
 - iii. Grocery stores
 - iv. Senior and disabled services
3. Overlay the existing TriMet network to determine what connections aren't served or are underserved (discuss transfers)
4. Any unserved/under served connections will be considered "connections of special concern"

Equity Index

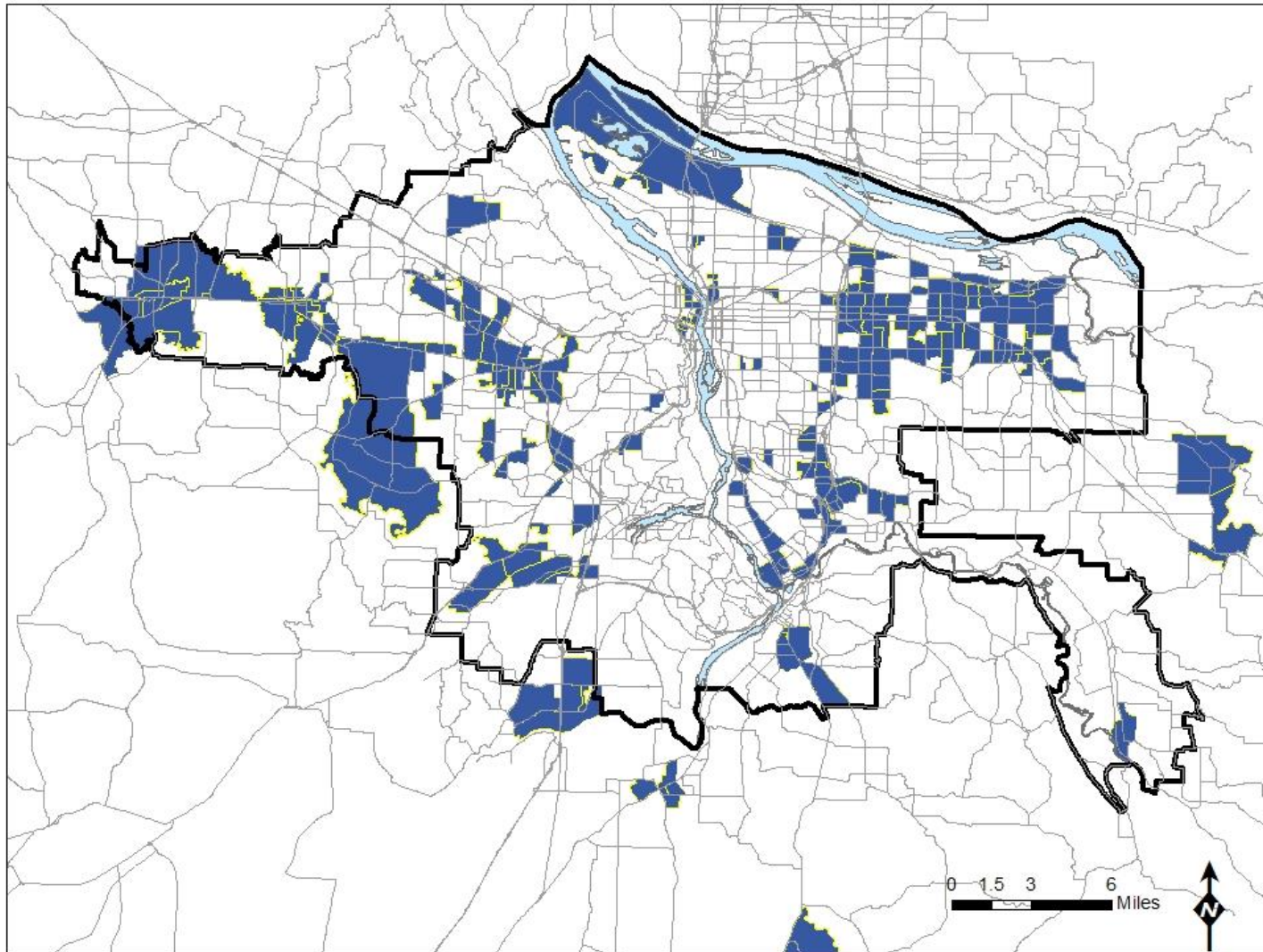
10 factor analysis

- People of color
- Limited English proficiency
- Youth population
- Limited vehicle access
- Affordable housing units
- Low income population (200% of fed. pov. Level)
- Senior population
- People with disabilities
- Low & medium wage jobs
- Key retail/human/social services

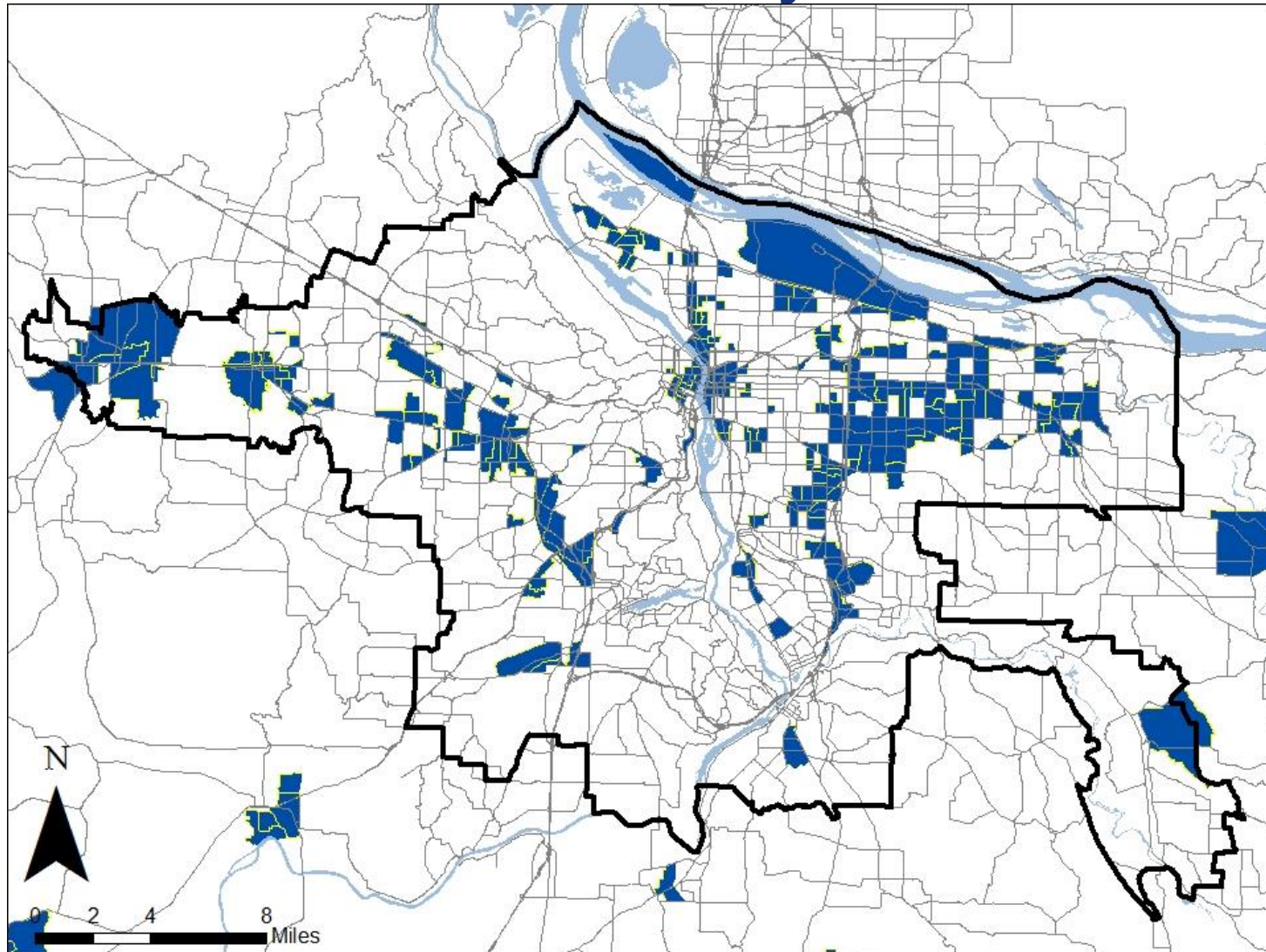
Top 20% Highest Scoring Census Blocks



Top 25% Highest Scoring Census Blocks

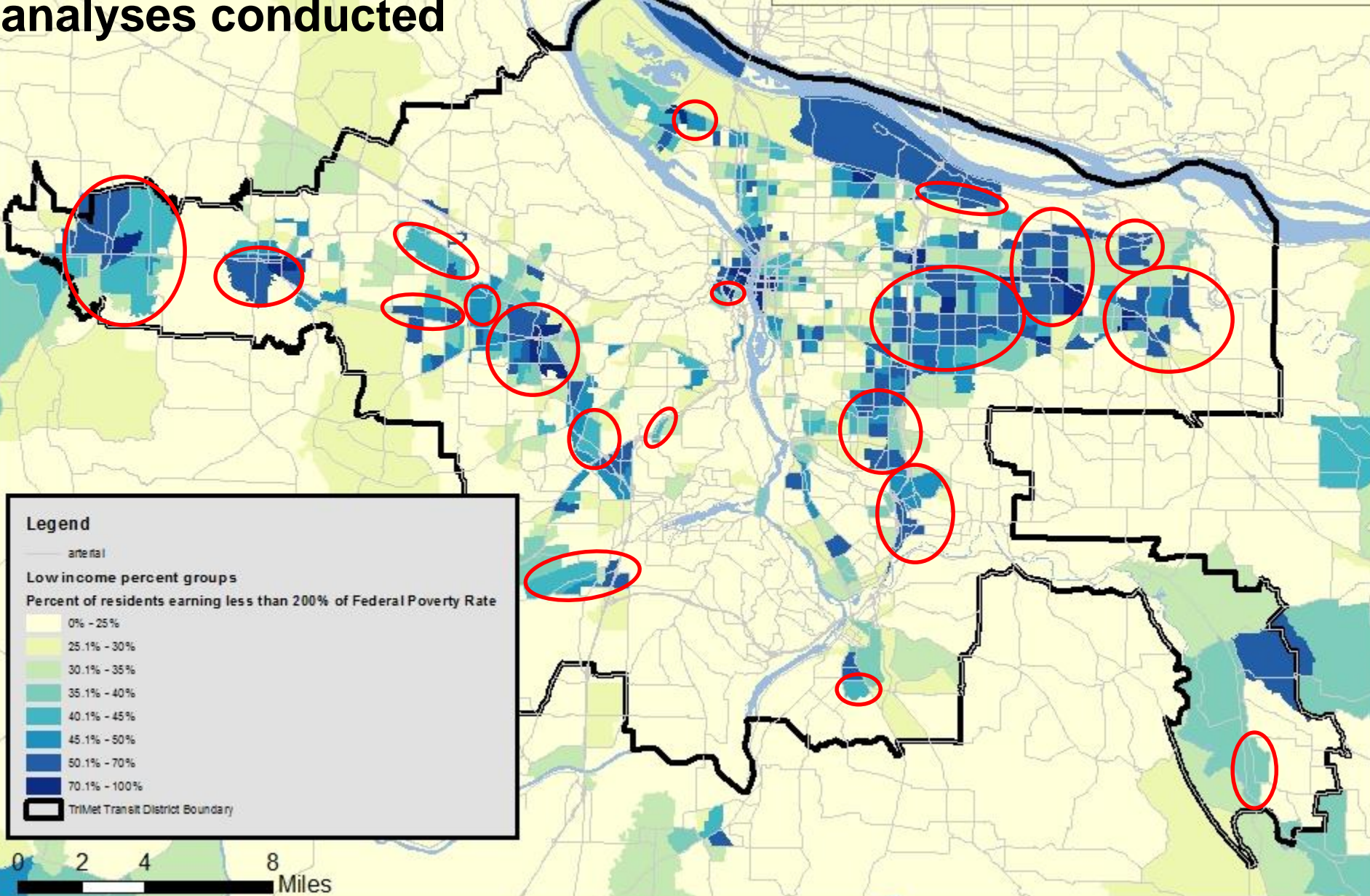


Census Blocks where People Earn Less than 40% of Federal Poverty Level



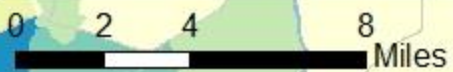
Many of the same block groups appear in all analyses conducted

Areas where people earn 200% of poverty



Legend

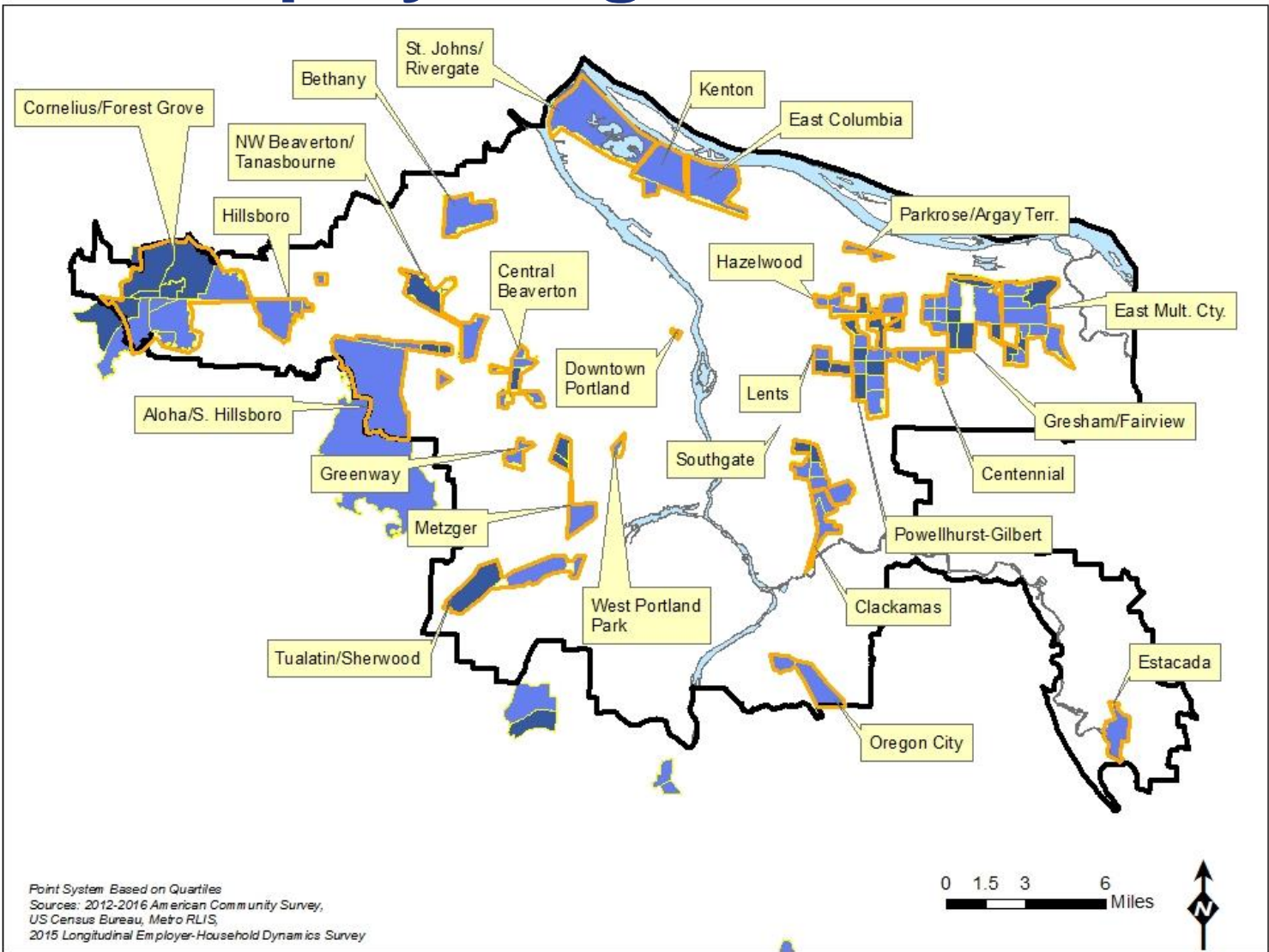
- arterial
- Low income percent groups**
Percent of residents earning less than 200% of Federal Poverty Rate
- 0% - 25%
- 25.1% - 30%
- 30.1% - 35%
- 35.1% - 40%
- 40.1% - 45%
- 45.1% - 50%
- 50.1% - 70%
- 70.1% - 100%
- TriMet Transit District Boundary



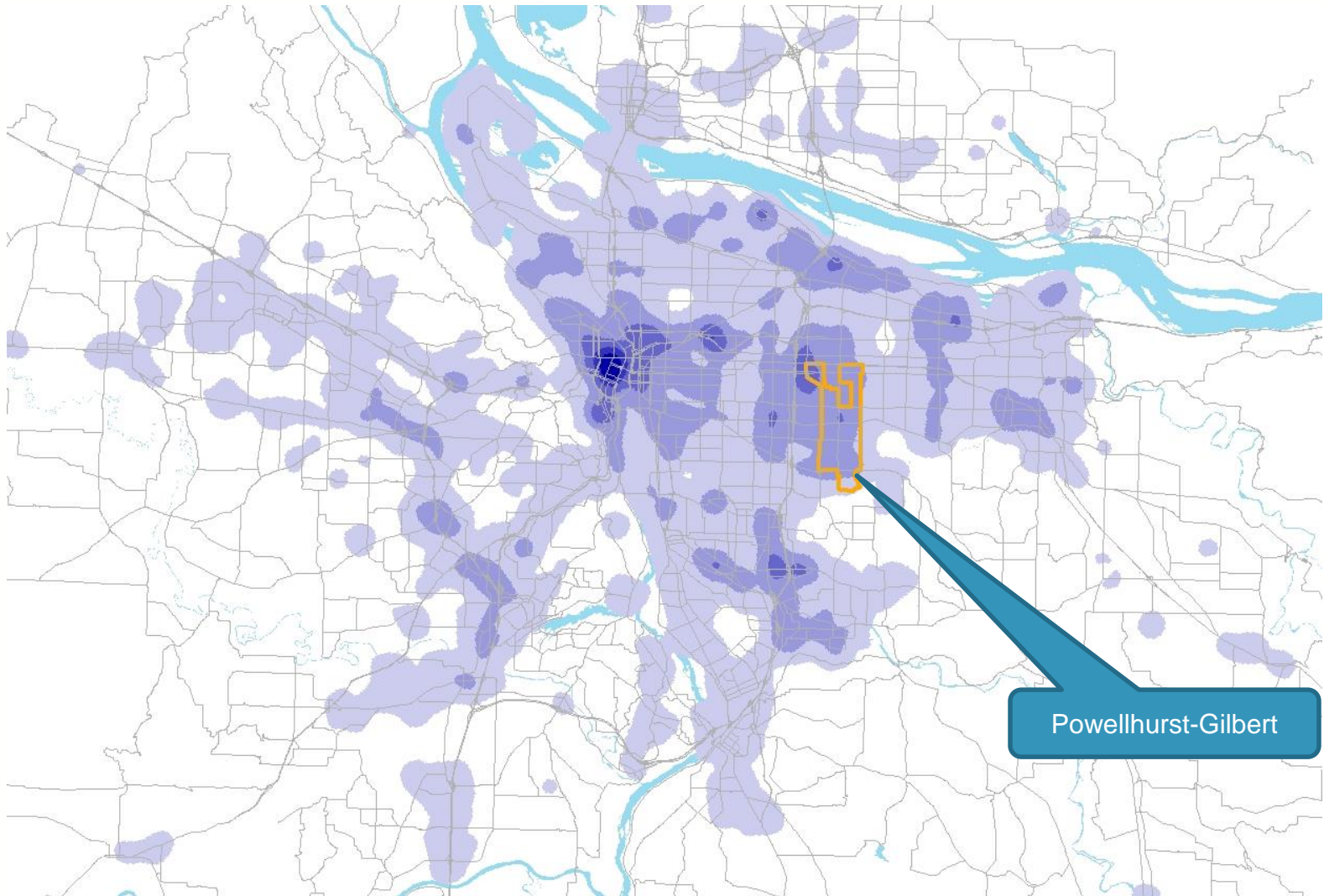


Decision Point: What is our Equity Map?

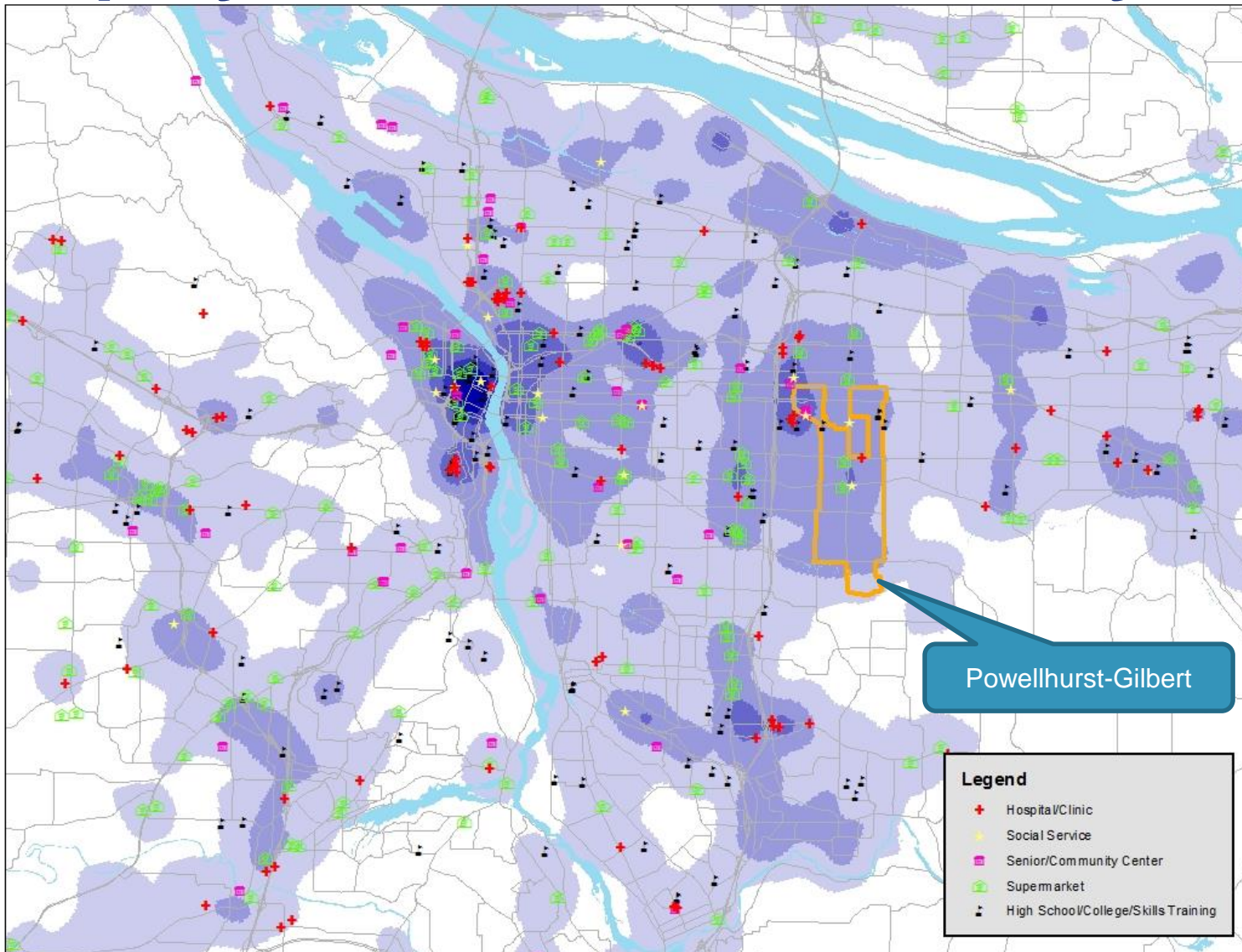
Equity Neighborhoods



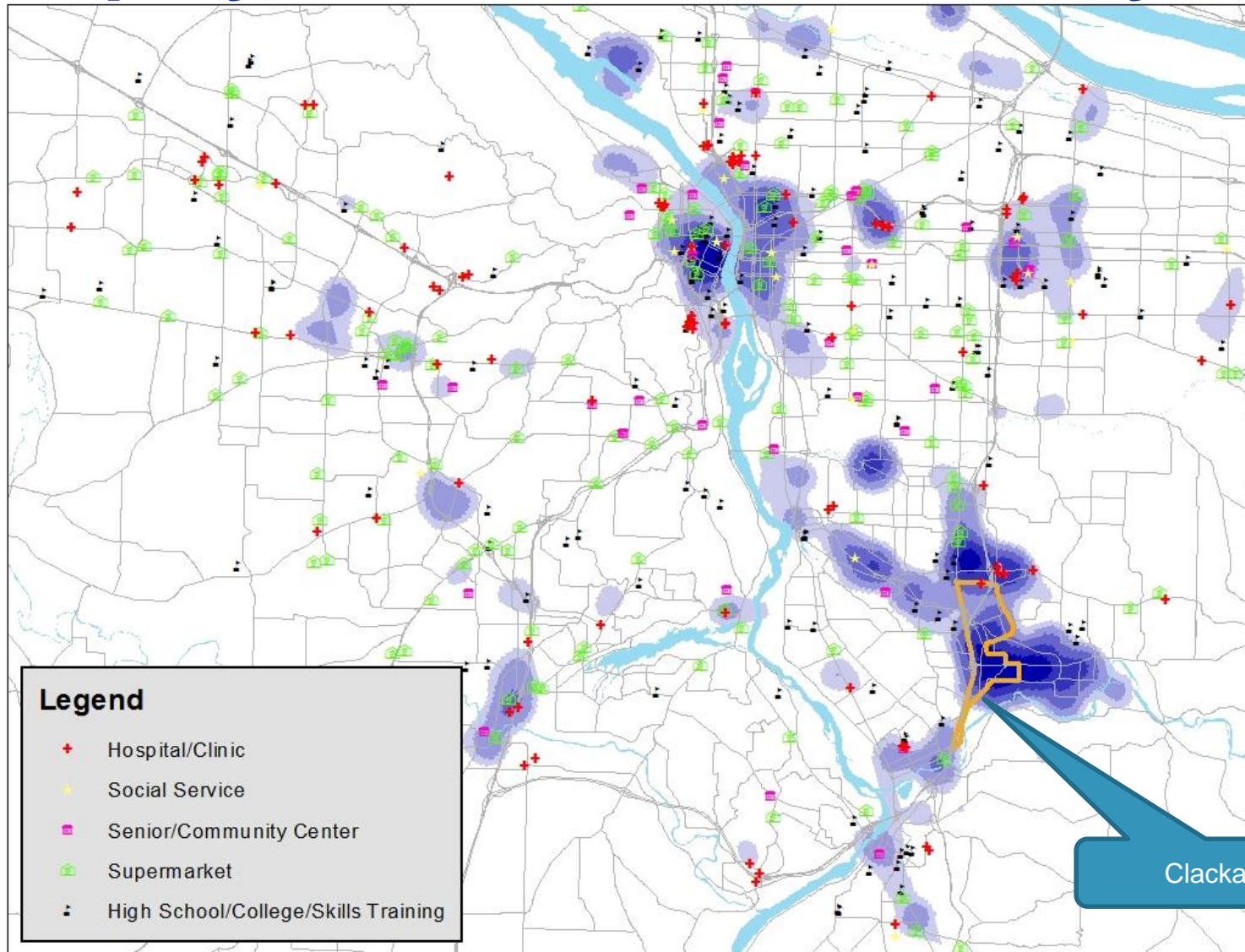
Employment Analysis



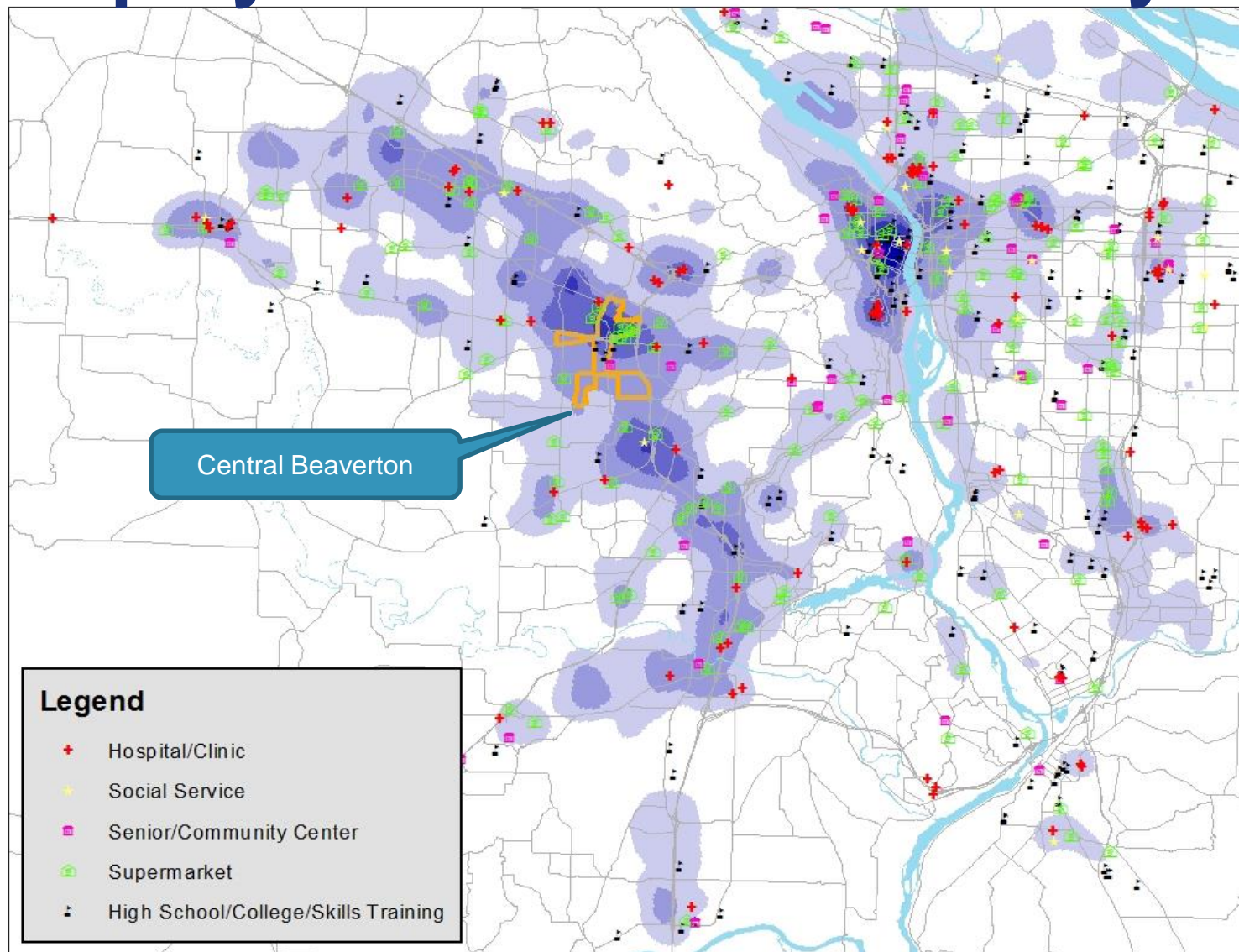
Employment/Destination Analysis



Employment/Destination Analysis



Employment/Destination Analysis



Draft Regional Coordination Selection Process & Timeline

2018

April

May

June

July

Early August

September

October

July 1, 2019

Appoint Subcommittee

Establish Program Framework, Project Eligibility Requirements & Evaluation Criteria

Project Solicitation Period

Project Evaluation & Selection

Incorporate Selected Projects into County Plans

HB 2017 Plan Public Comment Period

HB 2017 Plan Approval

Program Implementation

1

2

3

4

5

6

Subcommittee Meetings



May 18
Approve Purpose Subcommittee Members



June 22
Update on Framework, Project Eligibility Requirements & Evaluation Criteria



August 24
Approve Selected Projects

TriMet HB2017 Advisory Committee Meetings



Approval of Regional Coordination Subcommittee

Subcommittee

- **Members:**
 - Andrew Singelakis, Director, Land Use and Transportation, Washington County
 - Deanna Palm, Executive Director, Hillsboro Chamber of Commerce
 - Teresa Christopherson, Administrative Services Manager, Clackamas County Social Services Division
 - Kelly Brooks, Assistant City Manager, City of Milwaukie
 - Jessica Berry, Senior Transportation Planner, Multnomah County
 - Francesca Patricolo, Transportation Planner, City of Portland
 - Andre Petett, Managing Director, Aptly Focused
 - Christine Lau, Chief Operating Officer, Asian Health and Service Center

Transit 101

Michelle Poyourow

Senior Associate

Jarrett Walker + Associates

Updates

Public Workshops

- 4 Workshops (6:00 p.m. to 8:30 p.m.)
 - Clackamas County – May 23rd, Milwaukie HS
 - North/Northeast Portland – May 24th, SEI
 - East Portland/East Multnomah County - June 6th, IRCO
 - Washington County – June 7th, Hillsboro Civic Ctr.

- IRCO – subcontracting with other groups

• Centro Cultural	• SEI
• POIC	• Elders in Action
• Ride Connection	• NAYA

- Online survey – trimet.org/futureservice
- General Manager listening sessions

Next Meeting: June 22nd

Agenda

- Results from online survey and public workshops
- Funding ratios discussion
- Content presentation
 - Electric bus
 - Speed & reliability
 - Capacity
 - Fares
 - Safety & Security