



G R E A T P L A C E S

**Corridor**

Portland • Sherwood • Tigard • Tualatin  
Beaverton • Durham • King City  
Washington County • ODOT • TriMet • Metro

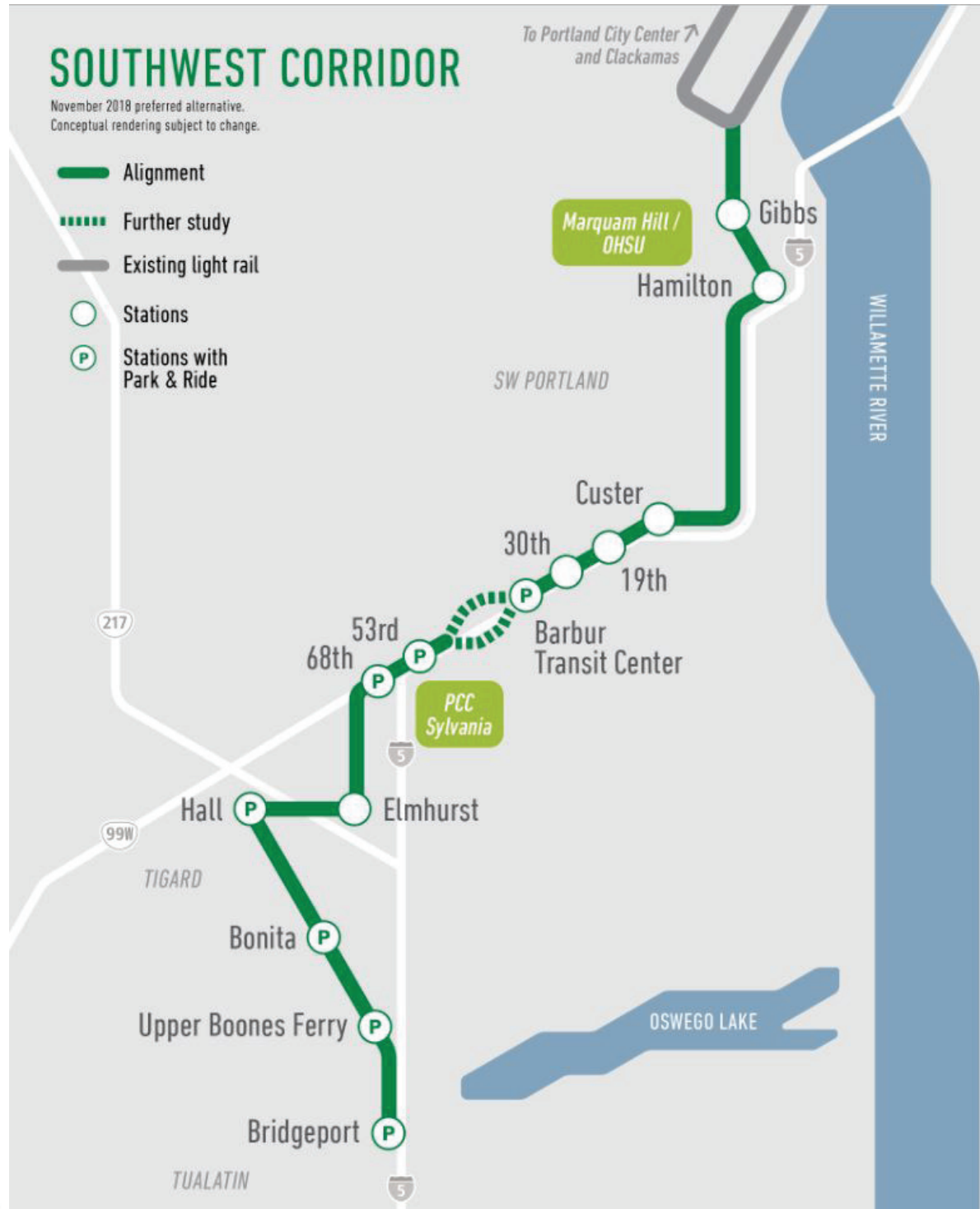
# Marquam Hill Green Ribbon Committee Meeting February 13, 2019

# Project Background

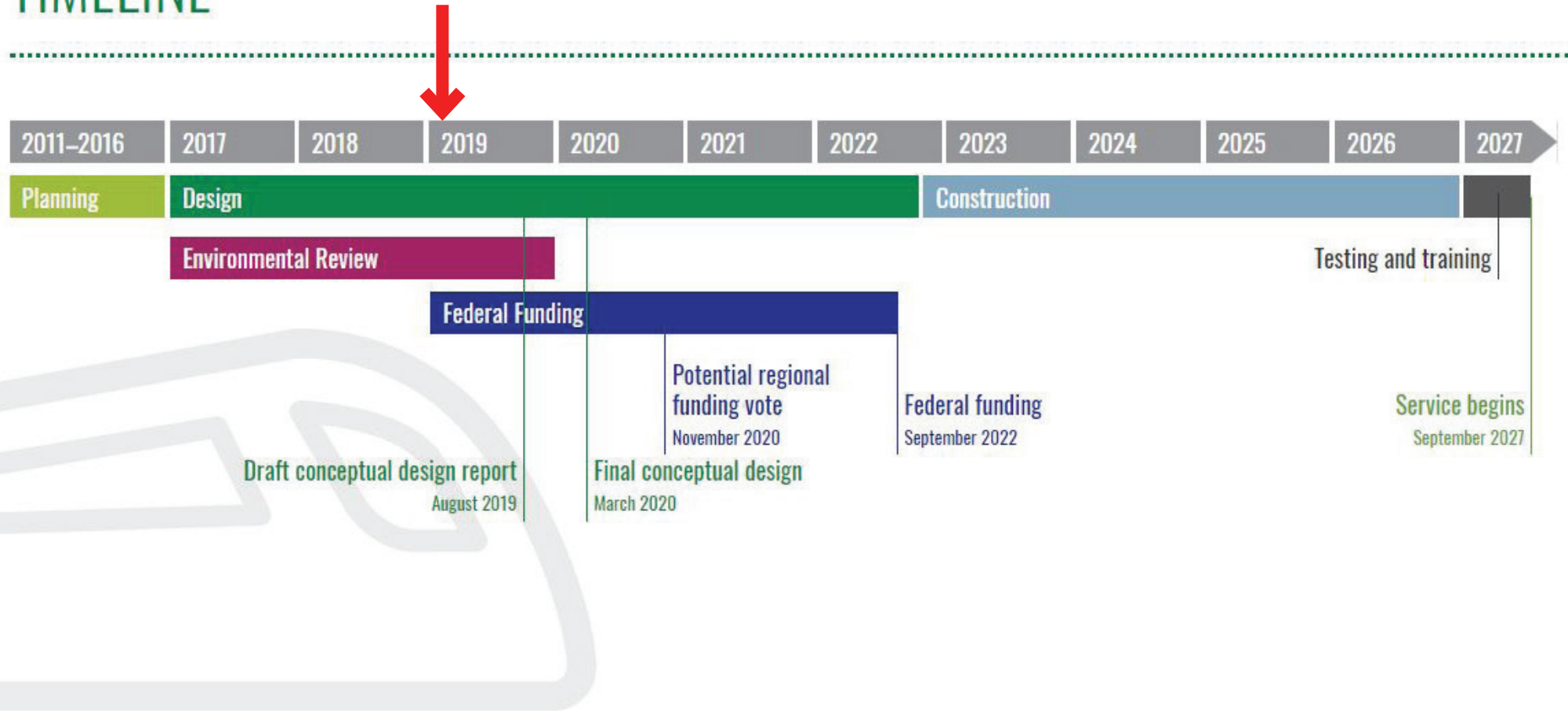
# SOUTHWEST CORRIDOR

November 2018 preferred alternative.  
Conceptual rendering subject to change.

- Alignment
- ⋯ Further study
- Existing light rail
- Stations
- Ⓟ Stations with Park & Ride

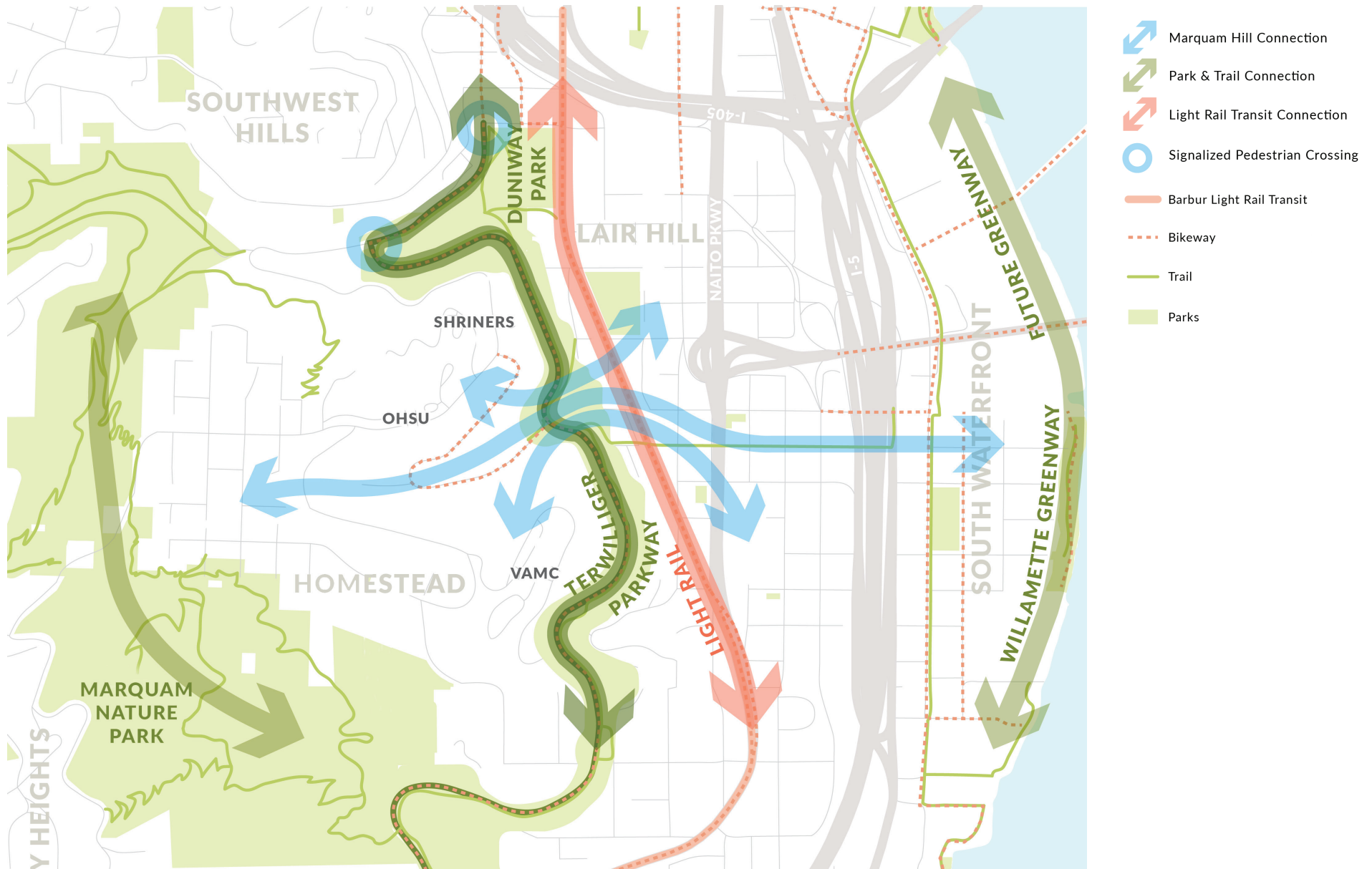


# TIMELINE



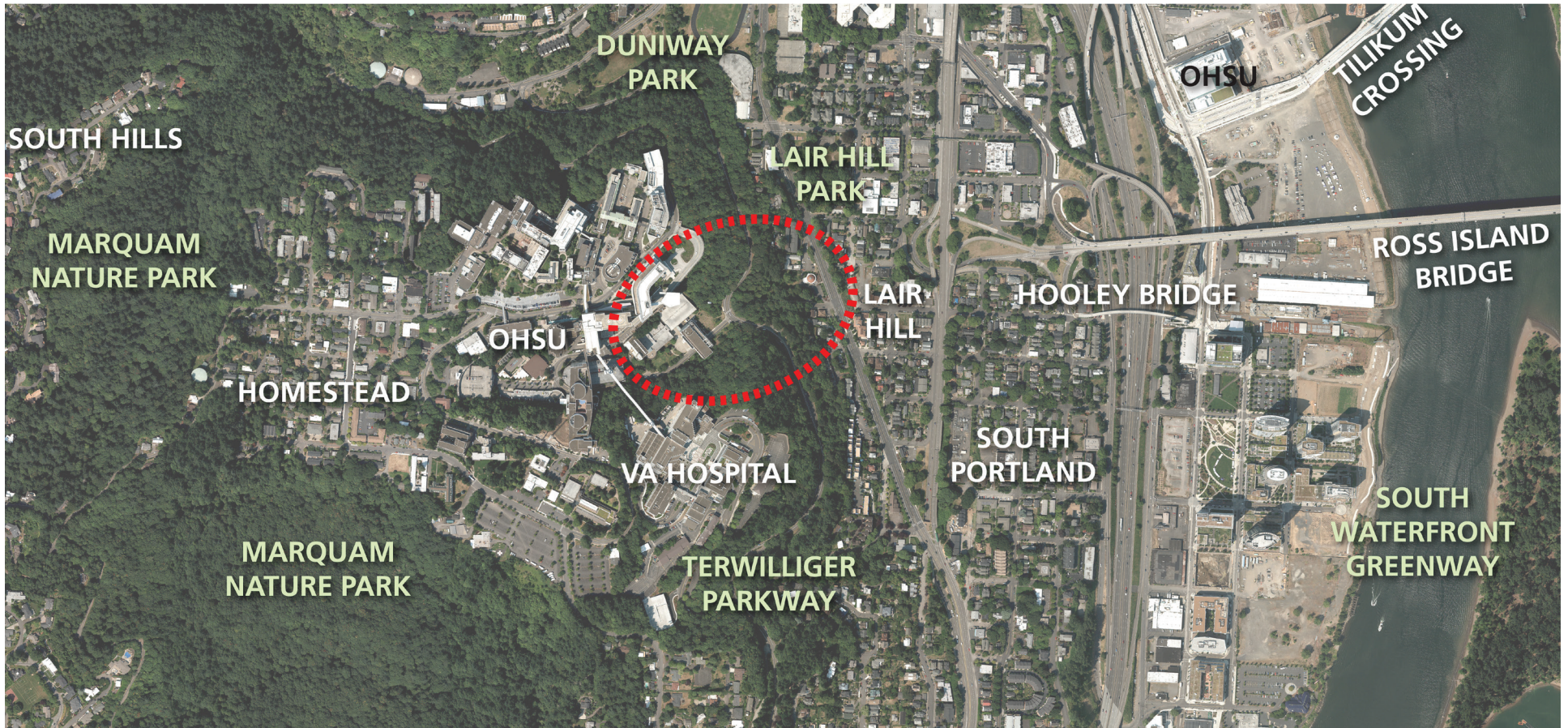


# Marquam Hill Connections





# Project Context





# Marquam Hill Historical Context



1912 Preliminary Plan of Hillside Parkway



1918 Terwilliger Parkway



1921 Marquam Hill Campus of the University of Oregon Medical School



1939 aerial image of Marquam Hill



# Marquam Hill Historical Context



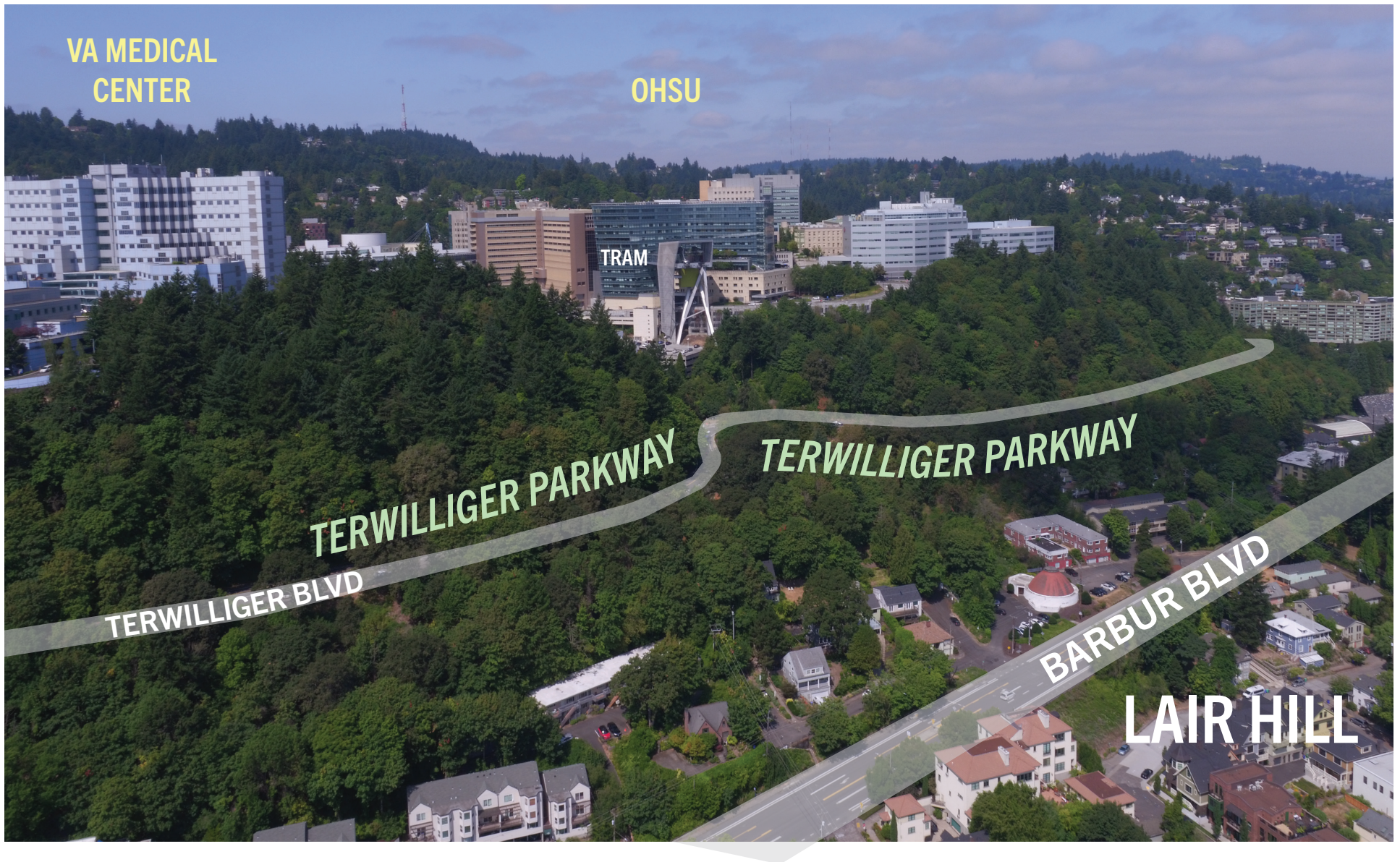
1953 aerial image with OHSU Hospital under construction



2018 aerial image with Elk's Children's Eye Clinic under construction

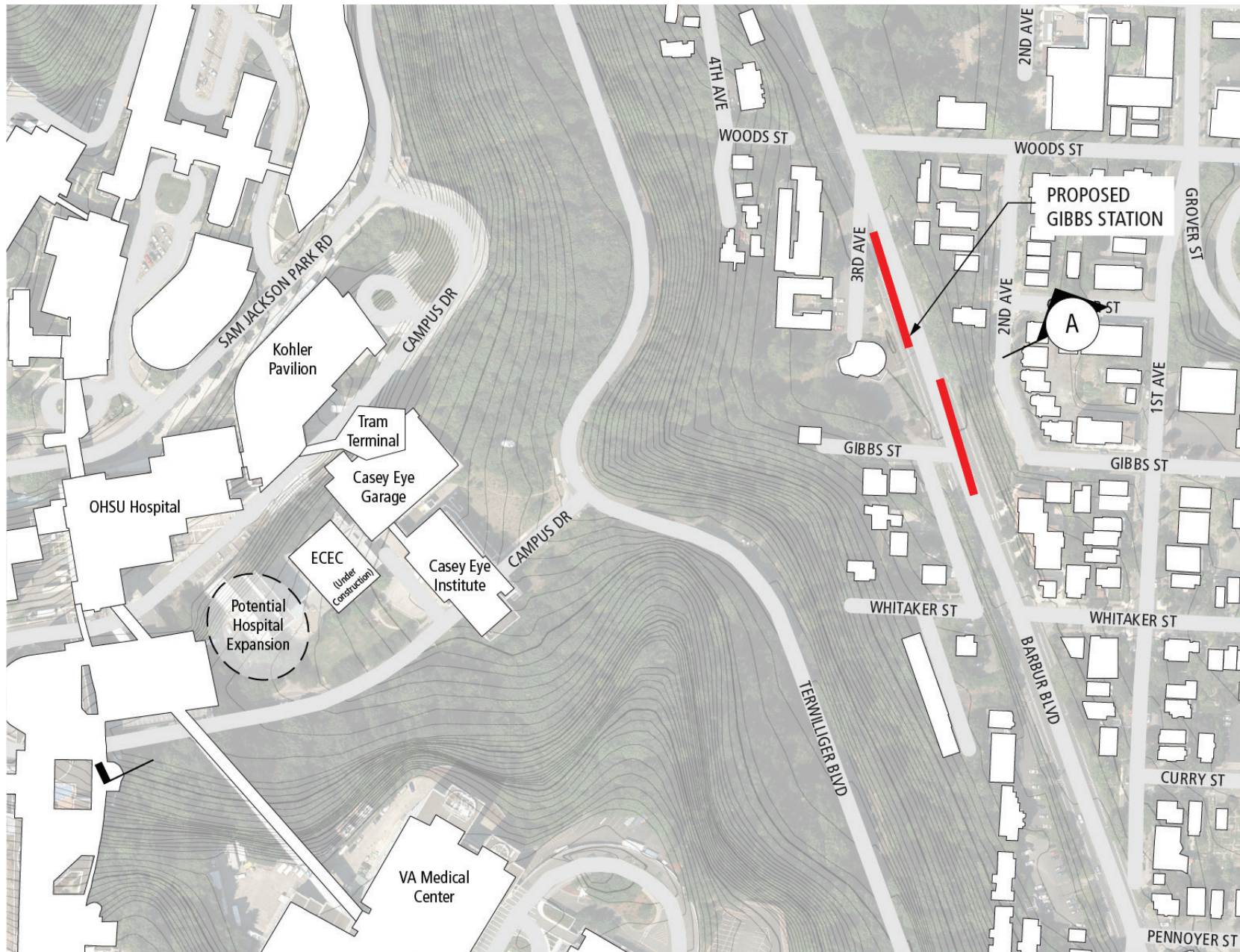


# Marquam Hill Today

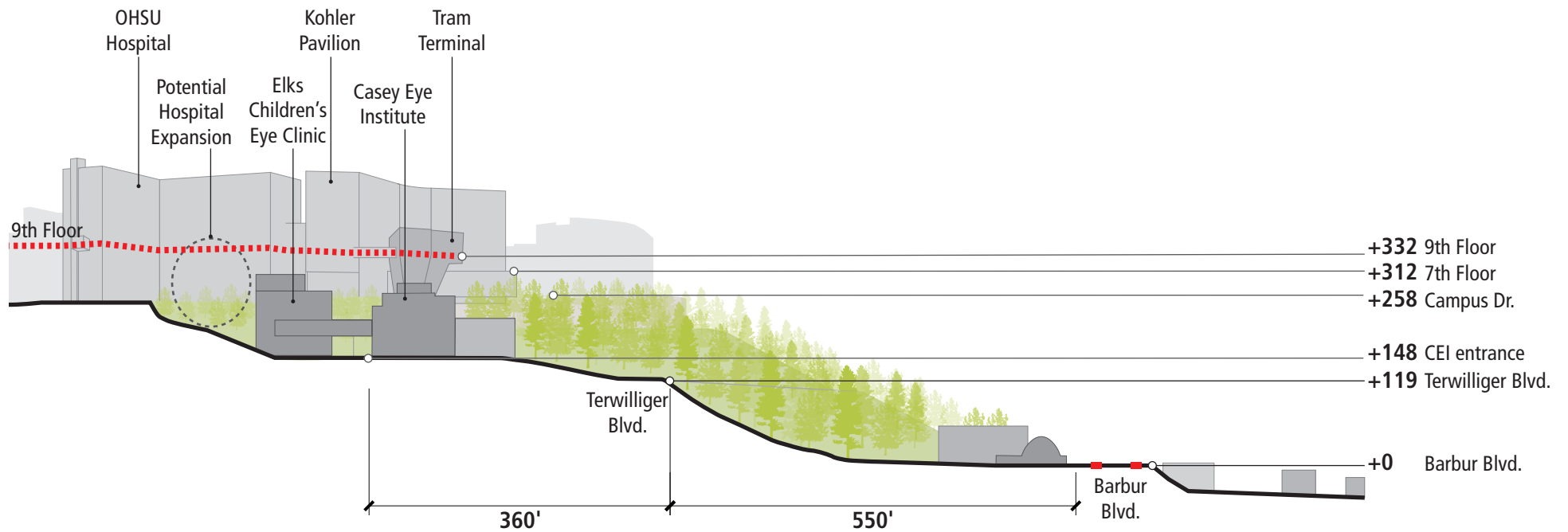




# Existing Conditions



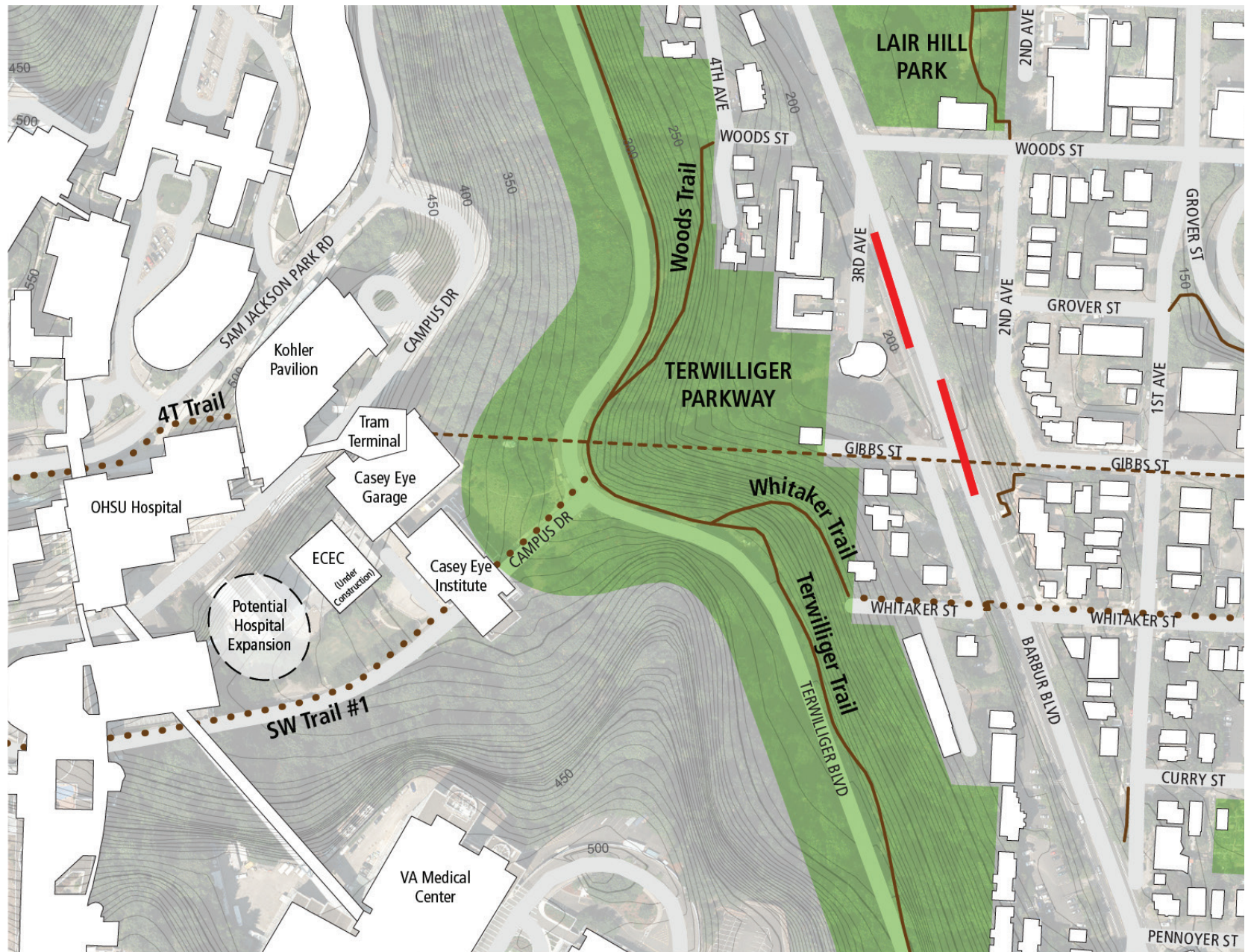
# Existing Conditions - Elevations



A SECTION ELEVATION

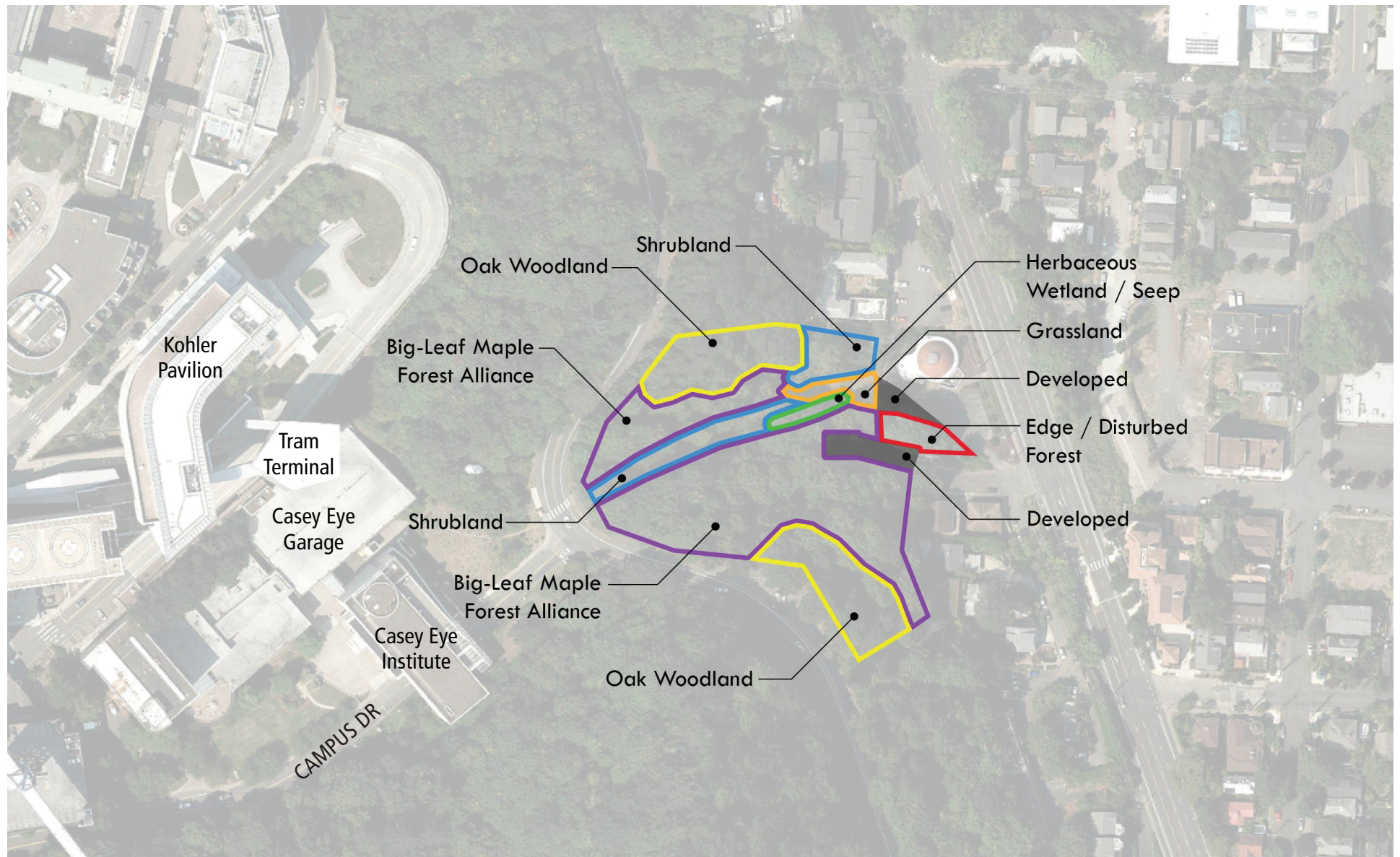


# Existing Conditions - Open Space & Trails



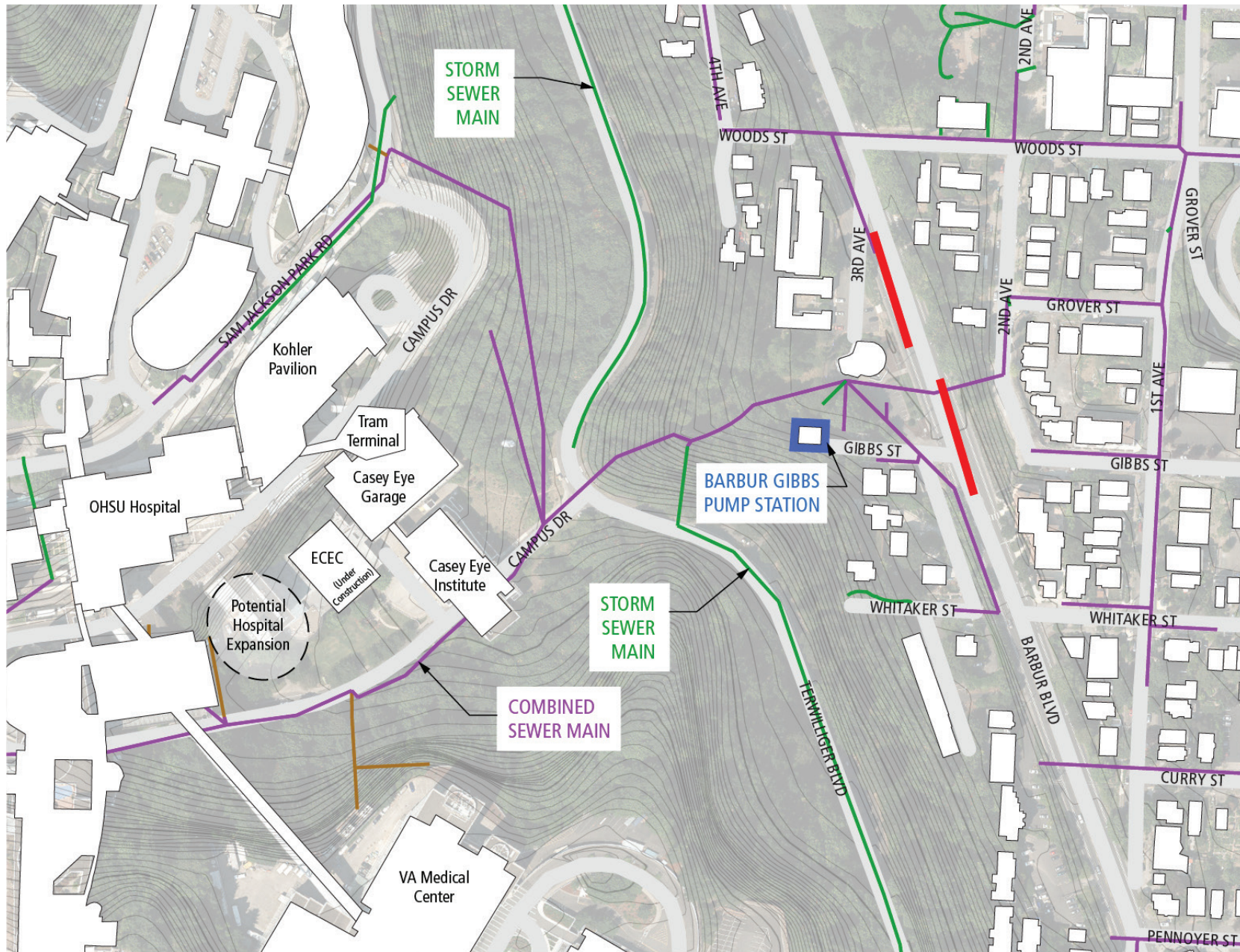


# Existing Conditions - Habitat Assessment



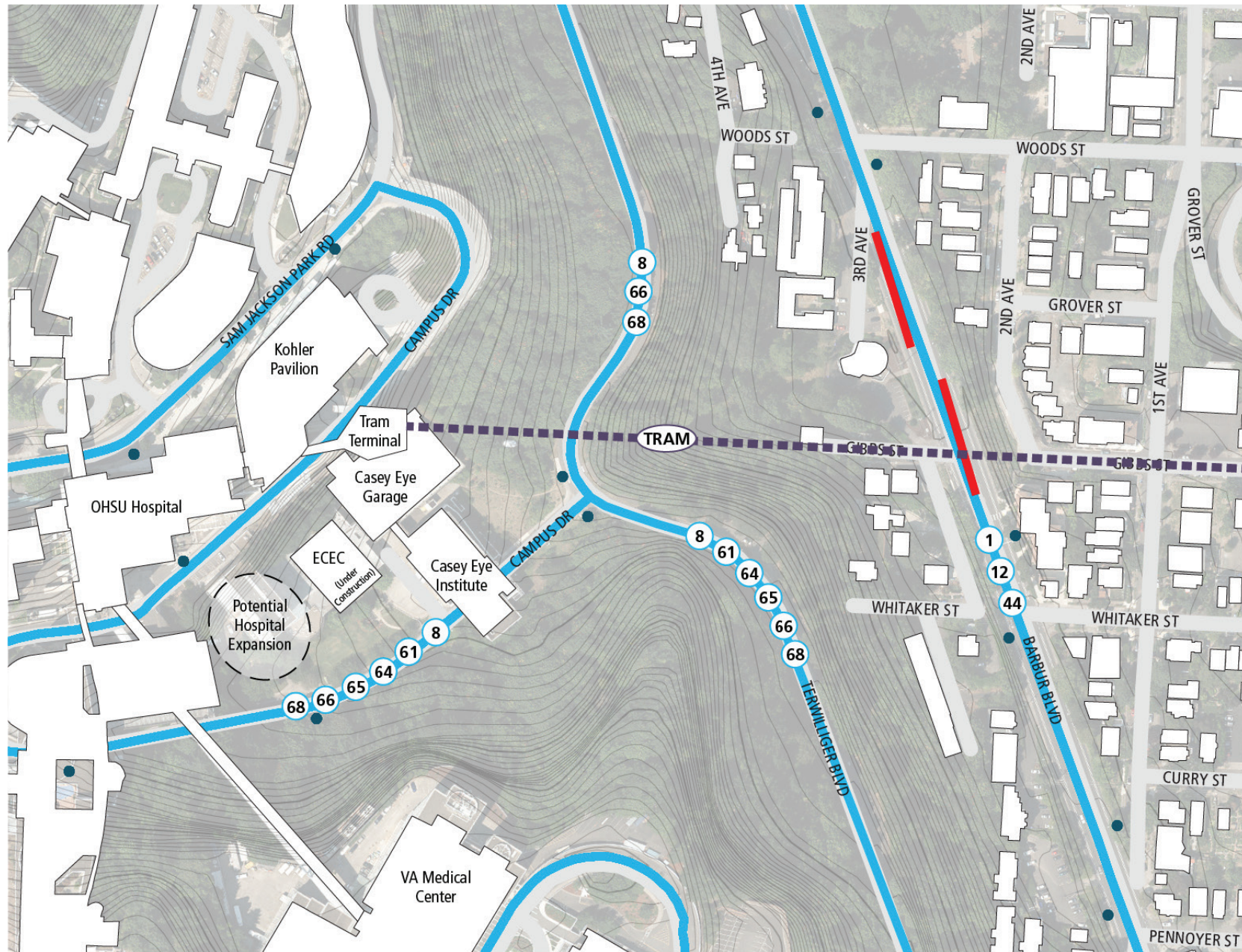


# Existing Conditions - Utilities





# Existing Conditions - Transit

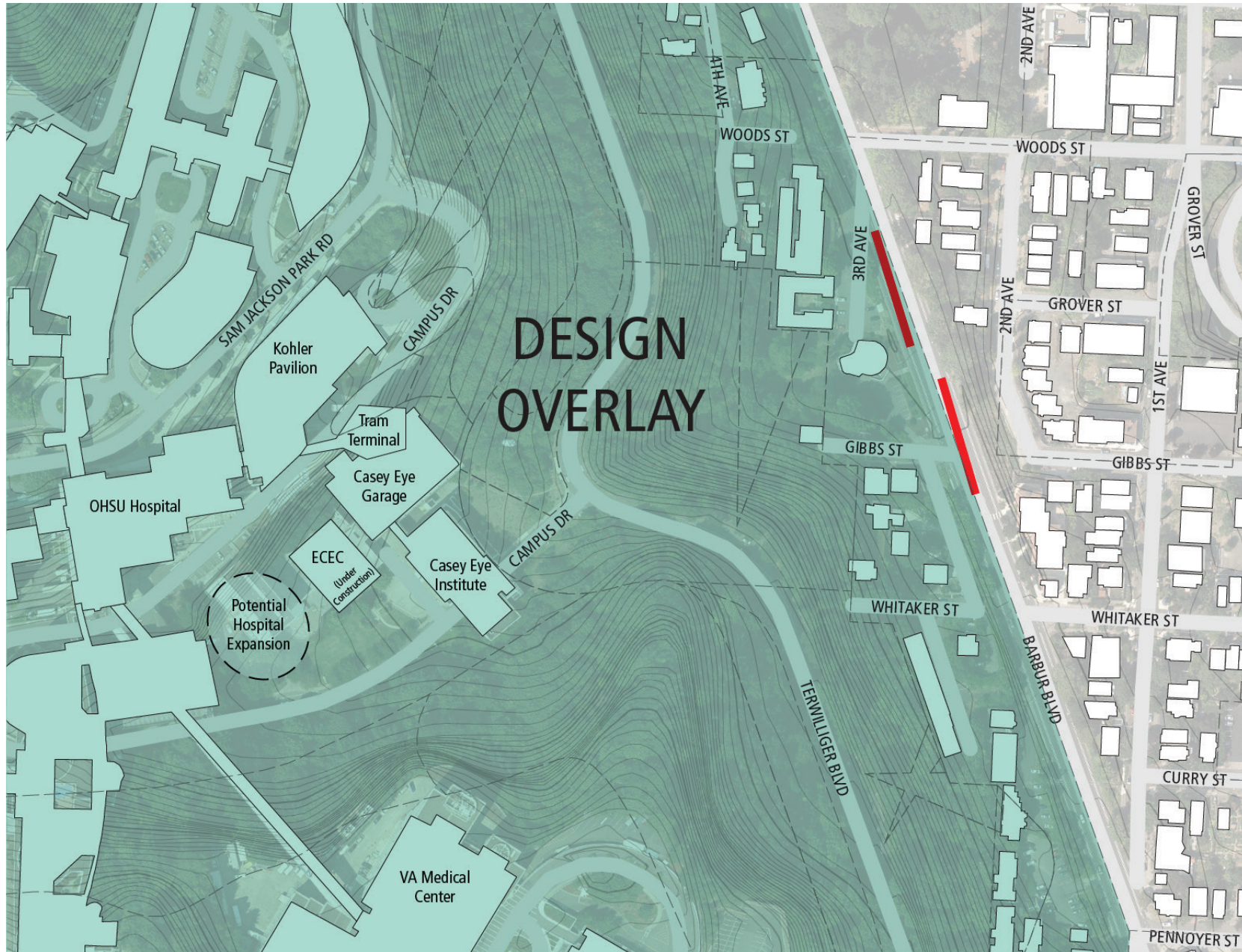








# Overlay Zones - Design

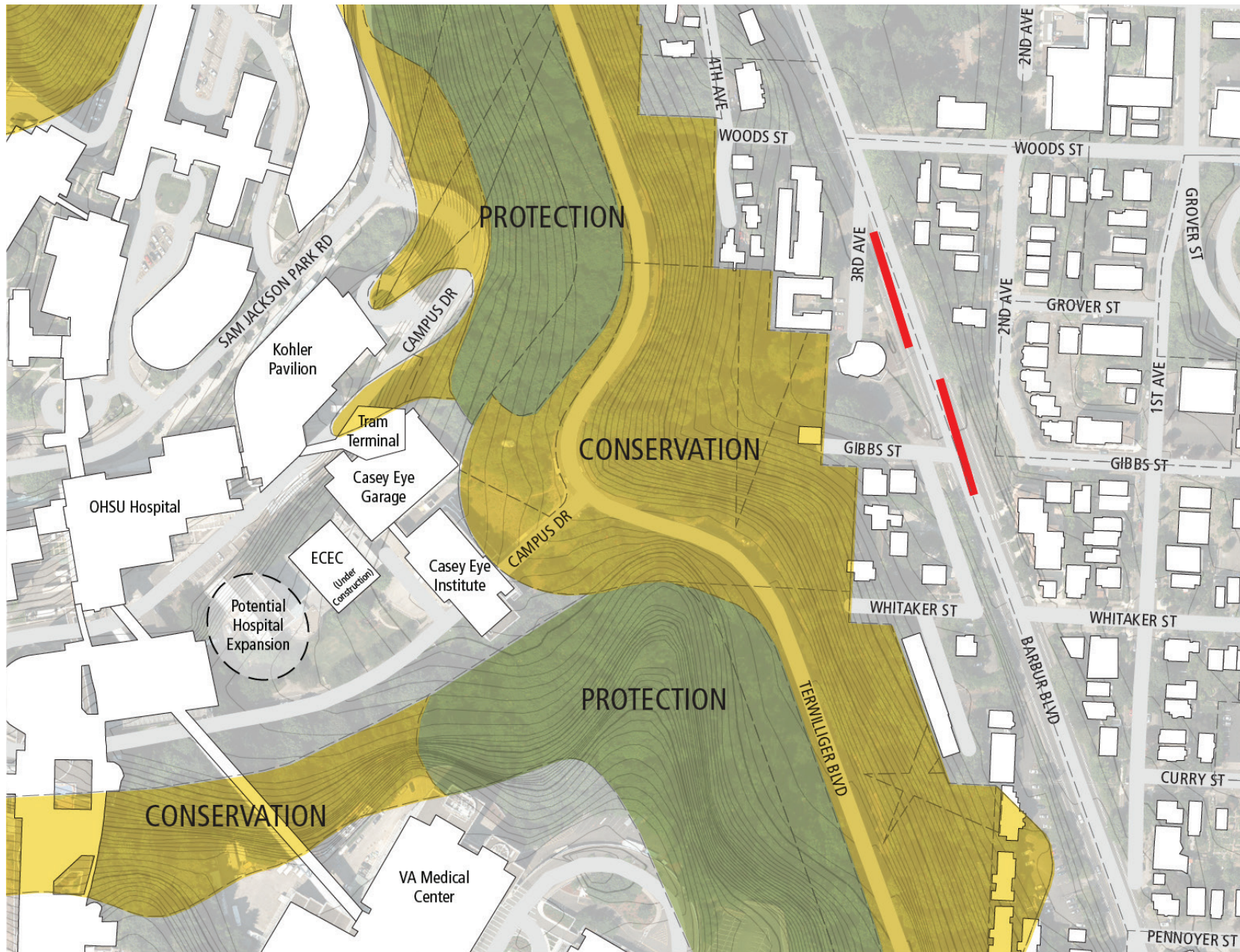


**DESIGN  
OVERLAY**



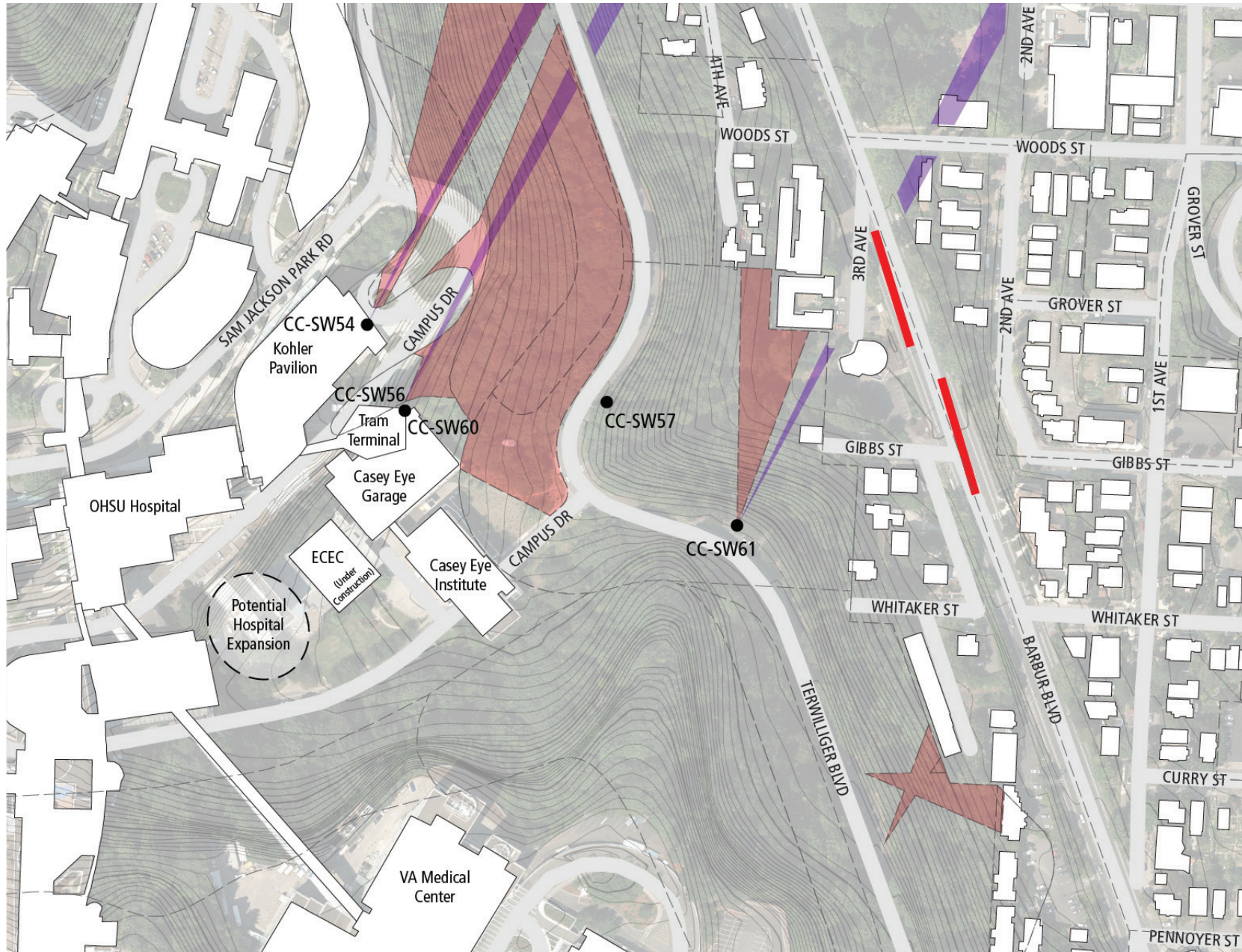


# Overlay Zones - Environmental





# Overlay Zones - Scenic Resource Protection





# Potential Connector Elements

- On-grade Path
- Elevated Walkway
- Elevator
- Bridge
- Tunnel
- Funicular
- Aerial Tram
- Escalator
- Other



Escalator, Hong Kong



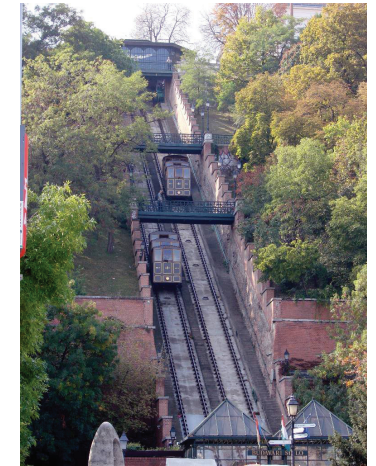
Bridge & Overlook, Philadelphia



Tunnel, Rotterdam



Darlene Hooley Bridge,  
Portland



Funicular, Budapest



# Process





# Goals & Potential Criteria

# ALL DESIGN OPTIONS WILL ADHERE TO THE FOLLOWING PROJECT REQUIREMENTS:

- ADA compliance
- Connection between station & OHSU
- Emergency responder access
- Compliance with local, state and federal regulations (including City of Portland's design zone, environmental zones & scenic resources zones)
- Wayfinding signage, lighting design, and safety features
- Appropriate materials that respect park and neighborhood
- Fundable by FTA and/or other sources with commitment to be in operation by opening of light rail

CATEGORY	GOALS “The Marquam Hill Connector should...”
ACCESS	<ul style="list-style-type: none"> <li>• Provide connections between the light rail station and destinations on Marquam Hill</li> <li>• Provide an efficient, convenient and comfortable connection for all types of users</li> </ul>
SAFETY	<ul style="list-style-type: none"> <li>• Create a safe and secure connection for all users</li> </ul>
CONTEXT	<ul style="list-style-type: none"> <li>• Best fit with, enhance, and improve the unique historic, scenic, recreational and design character of this area</li> </ul>

CATEGORY	GOALS “The Marquam Hill Connector should...”
<b>ENVIRONMENTAL</b>	<ul style="list-style-type: none"> <li>• Protect or enhance the area’s natural resources and sensitive habitat</li> </ul>
<b>OPERATIONAL</b>	<ul style="list-style-type: none"> <li>• Provide a long-term, sustainable connection for current and future users</li> </ul>
<b>BUDGET/ SCHEDULE</b>	<ul style="list-style-type: none"> <li>• Be cost effective and timely within the Southwest Corridor Light Rail Project</li> </ul>



G R E A T P L A C E S

**Corridor**

Portland • Sherwood • Tigard • Tualatin  
Beaverton • Durham • King City  
Washington County • ODOT • TriMet • Metro

# Marquam Hill Green Ribbon Committee Meeting February 13, 2019

## Next Meeting

Wednesday, March 13, 4:00-6:00 p.m.

Vey Auditorium – 11th Floor

Doernbecher Children's Hospital

700 SW Campus Dr, Portland, OR 97239